



SMART Digital XL

DDA

60 - 200 l/h

(15.8 - 52.8 gph)

Installation and
operating instructions DDA



net.grundfos.com/qr/i/98767821

be
think
innovate

GRUNDFOS 



PVC:

0 °C / +45 °C (32 °F / 113 °F)



PVDF/SS:

0 °C / +50 °C (32 °F / 122 °F)



Min./Max.

0 °C / +45 °C

32 °F / 113 °F

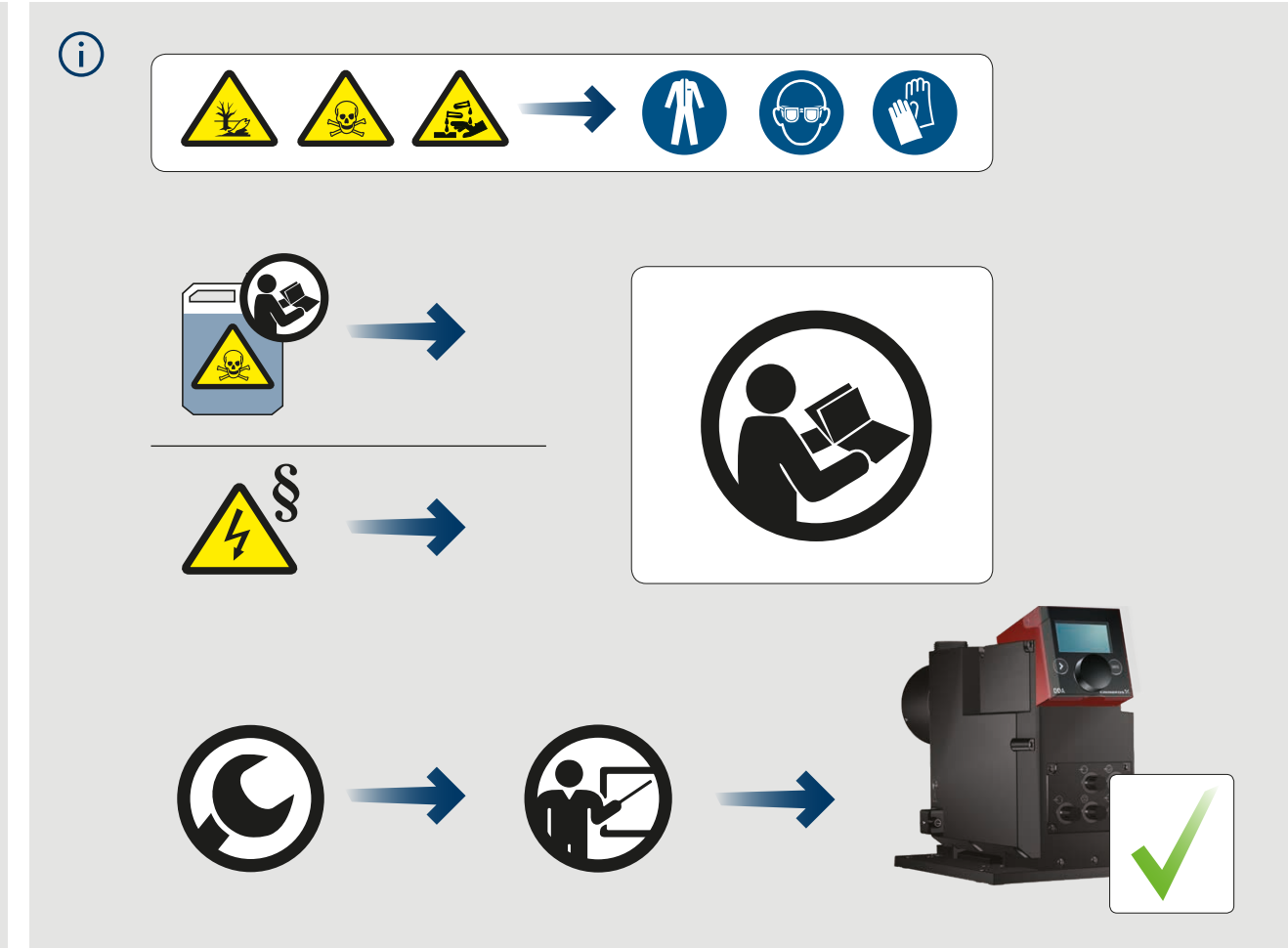
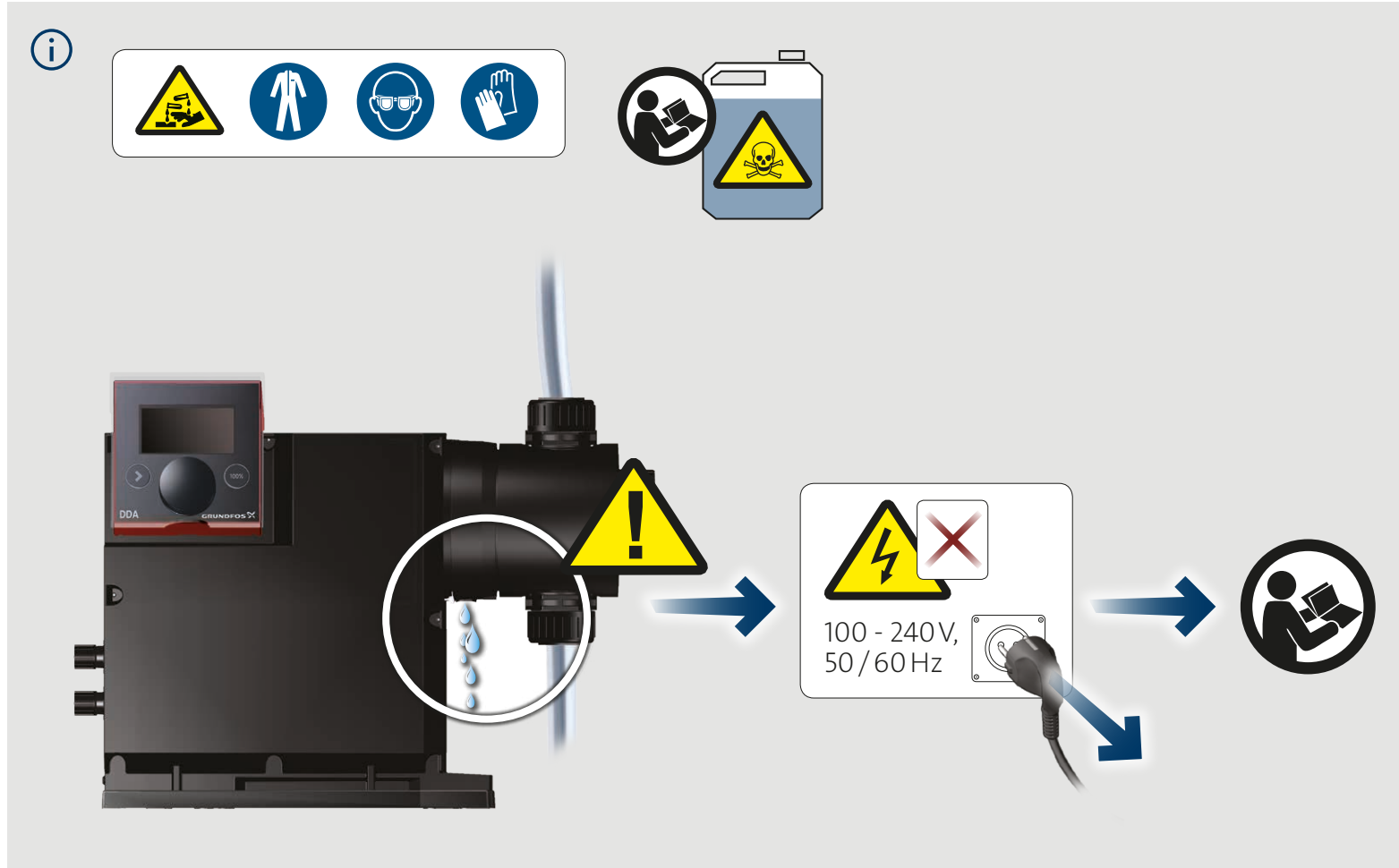
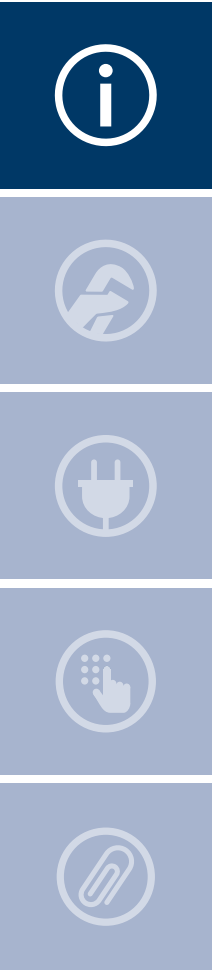


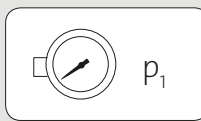
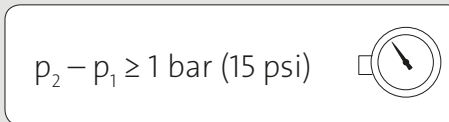
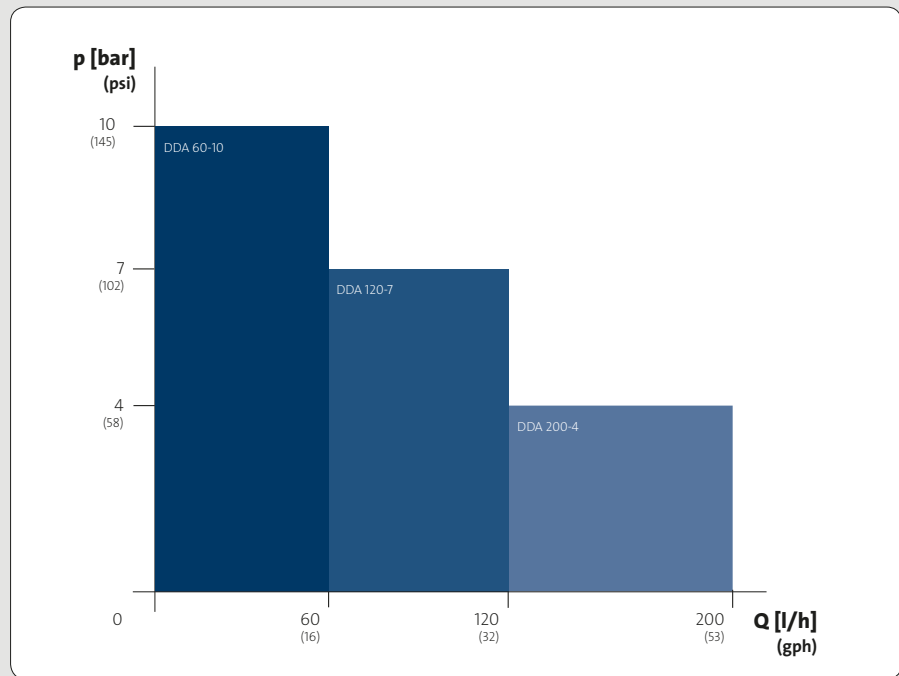
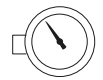
≤ 80 dB(A)

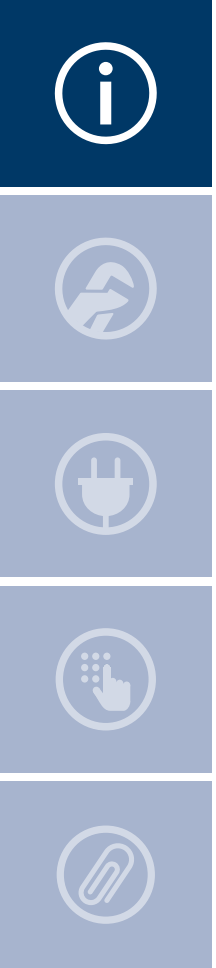




IP 65 (Nema 4x)









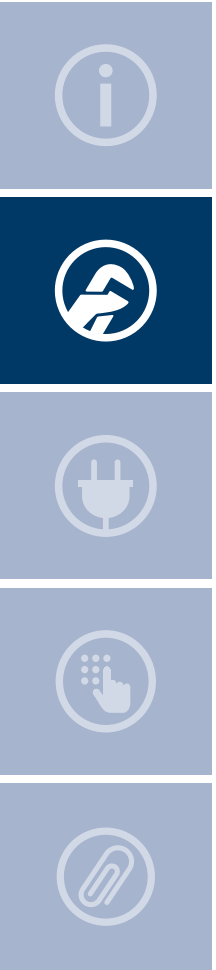
 100 - 240V,
50/60 Hz 

$\leq 1.5 \text{ m}/59''$

$\geq 100 \text{ mm}/4''$

$\geq 100 \text{ mm}/4''$





1

TORX PLUS (15 IP)

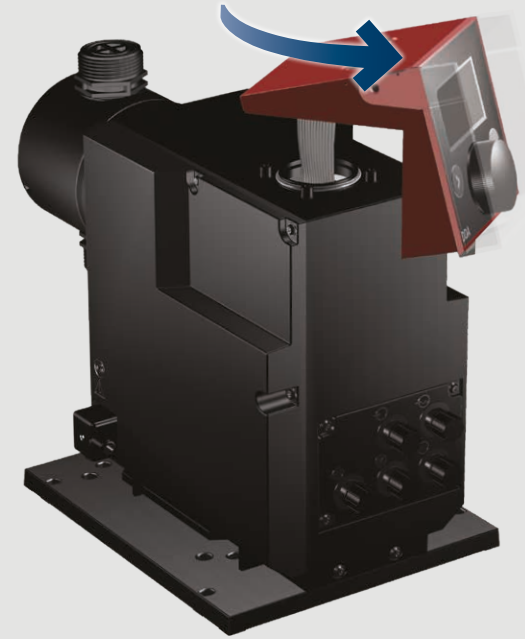


2

STOP

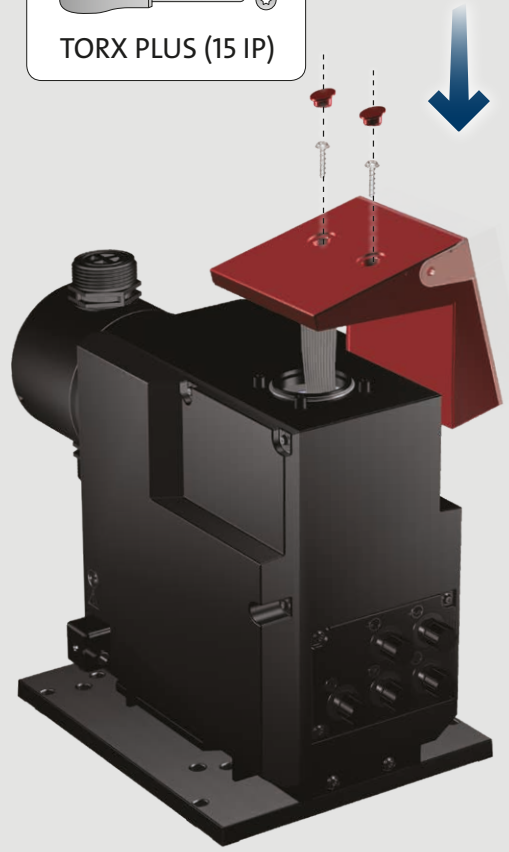


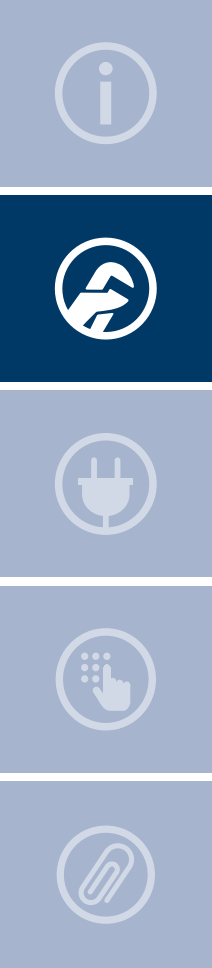
3



4

TORX PLUS (15 IP)

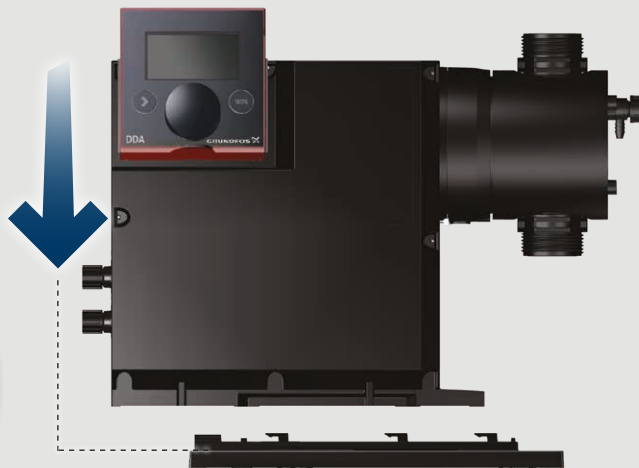
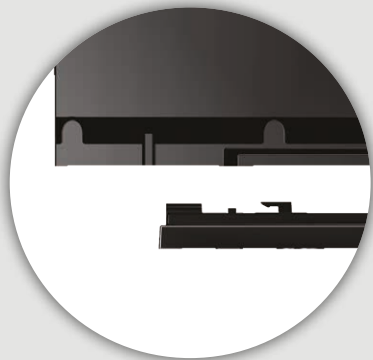
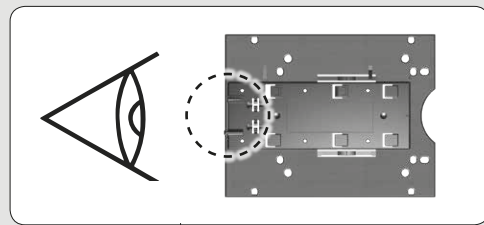




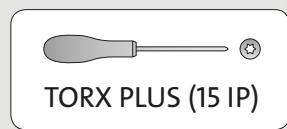
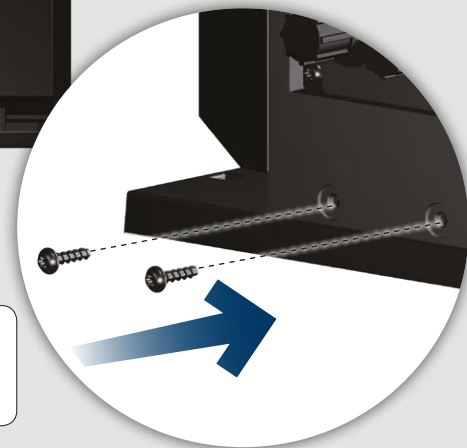
5

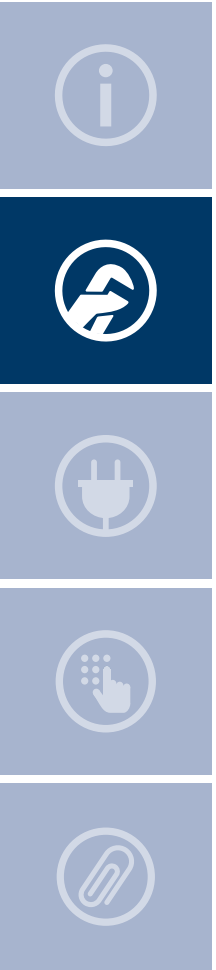


6

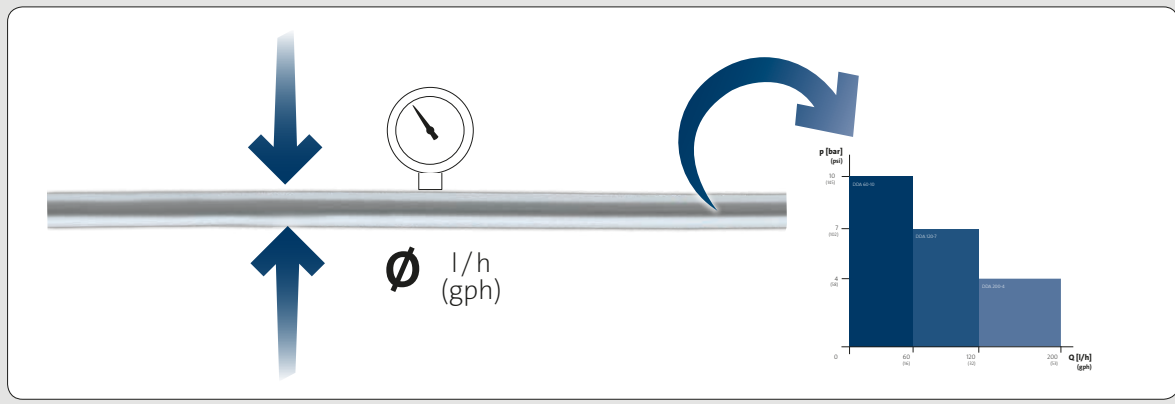
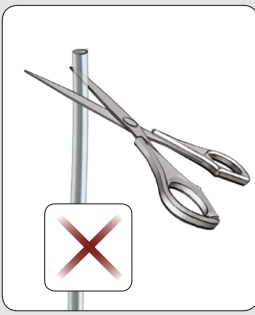
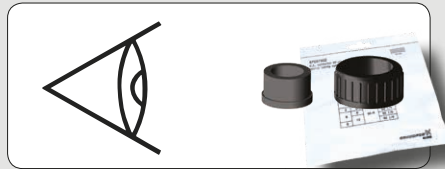


7

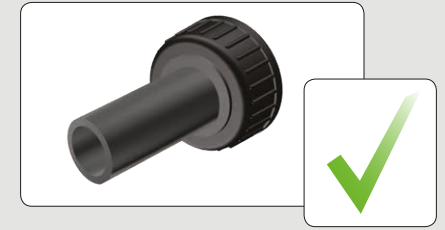
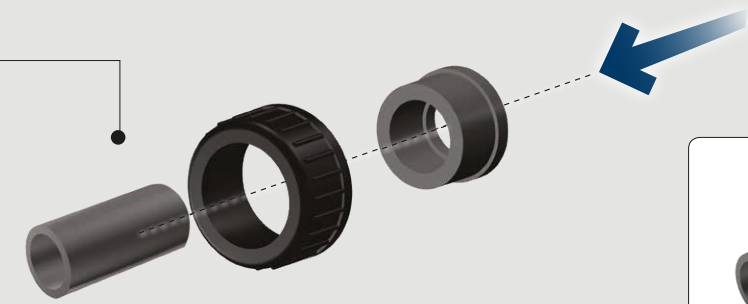
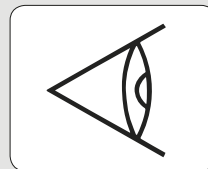




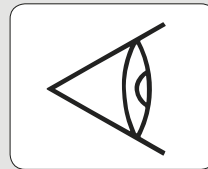
8

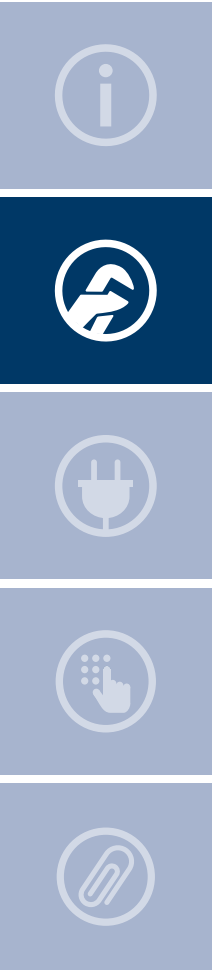


9a

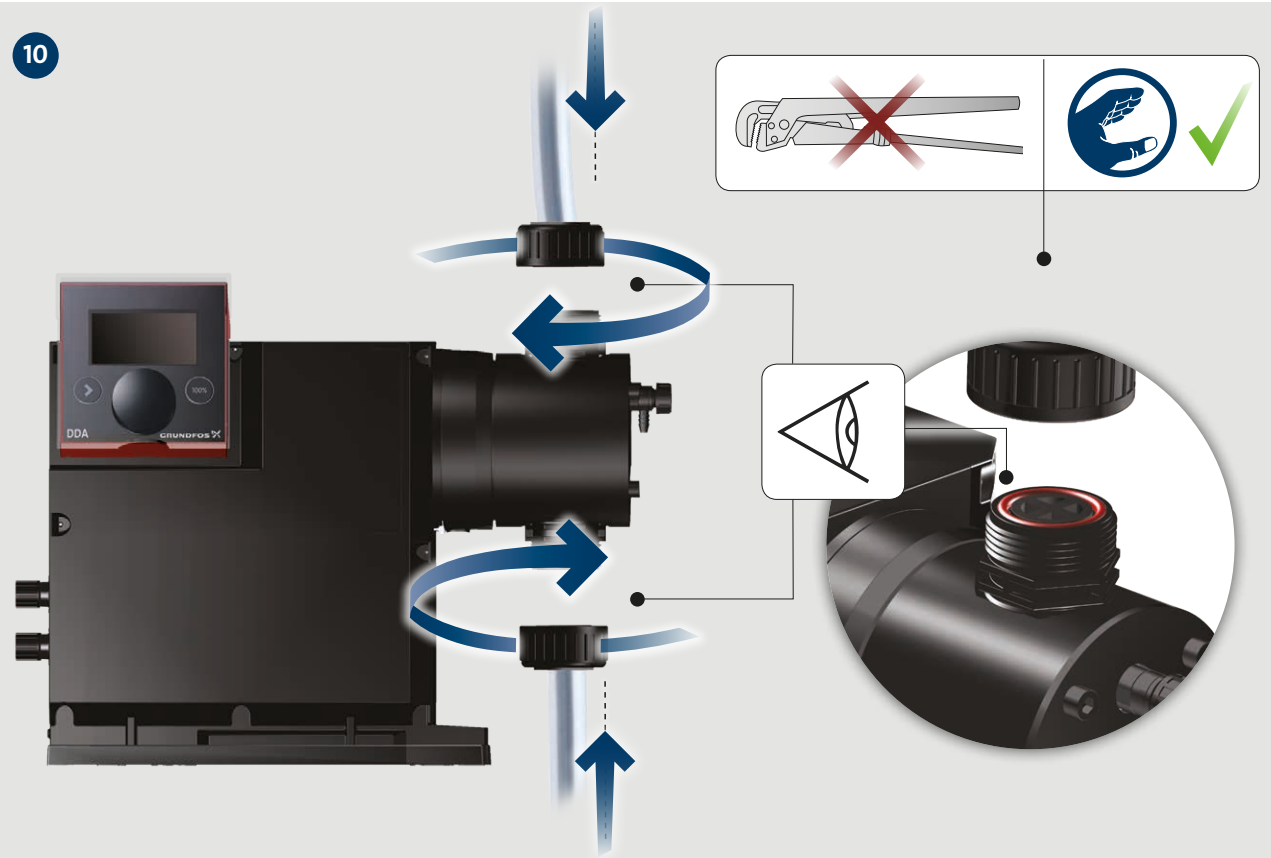


9b

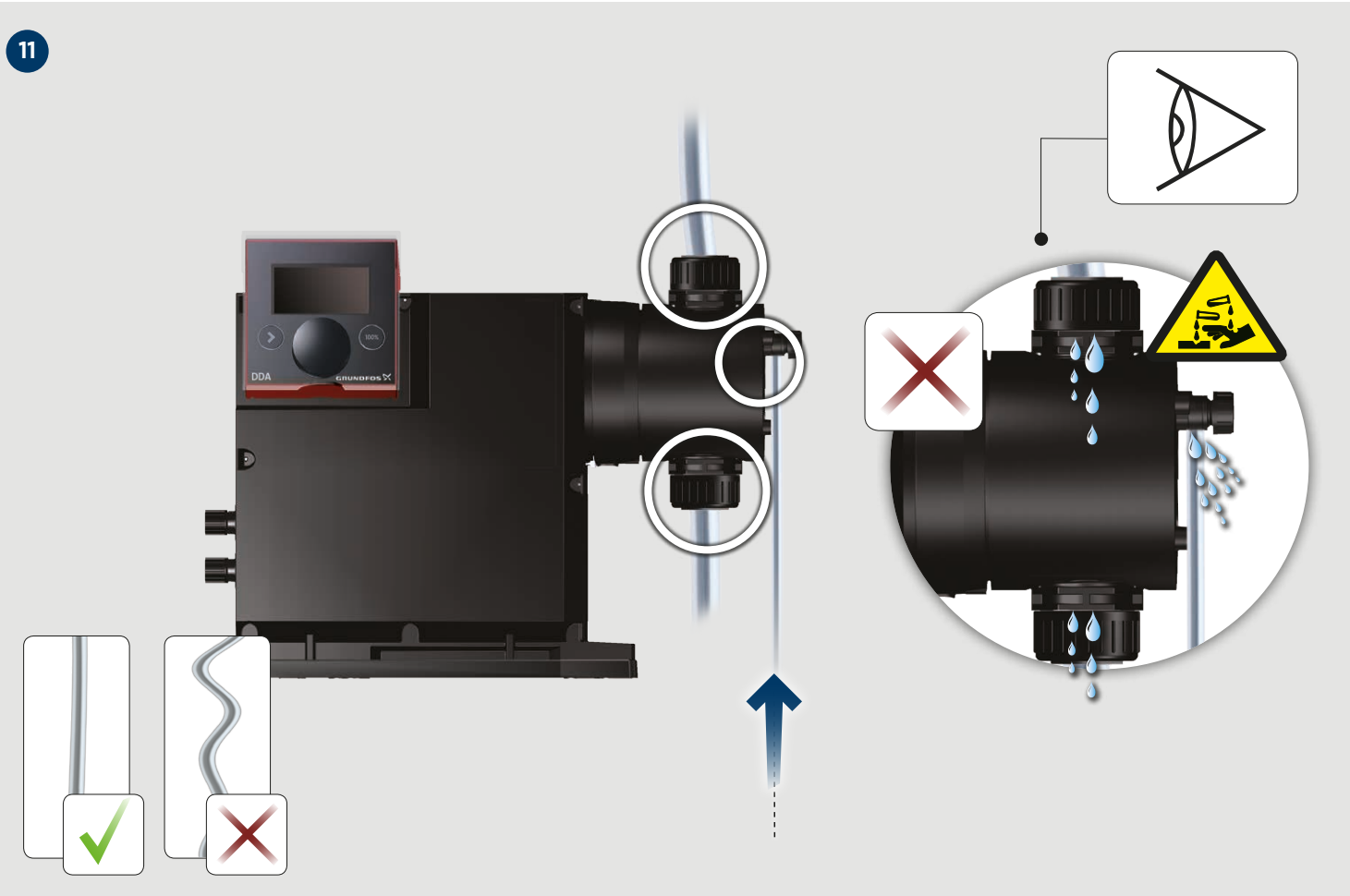




10




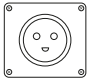
11




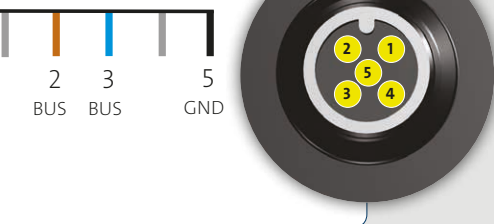



12

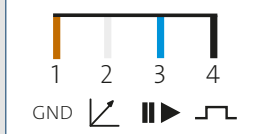
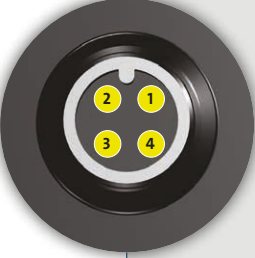
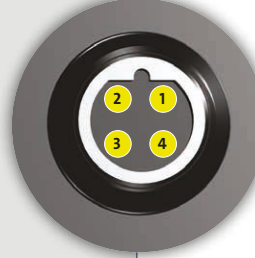

100 - 240V,
50/60Hz




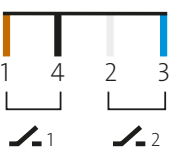

 Cable no.: 98589048




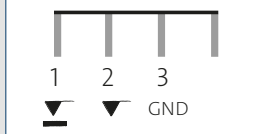

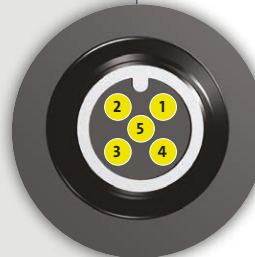







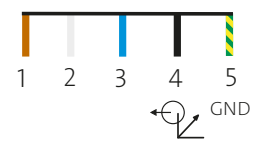






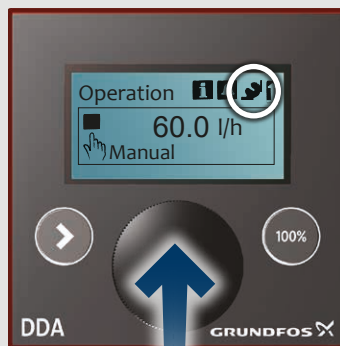
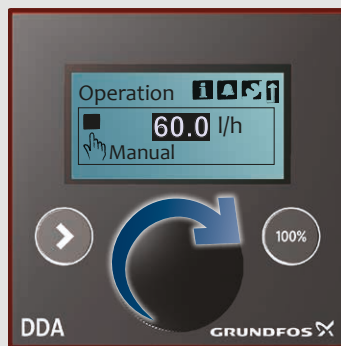




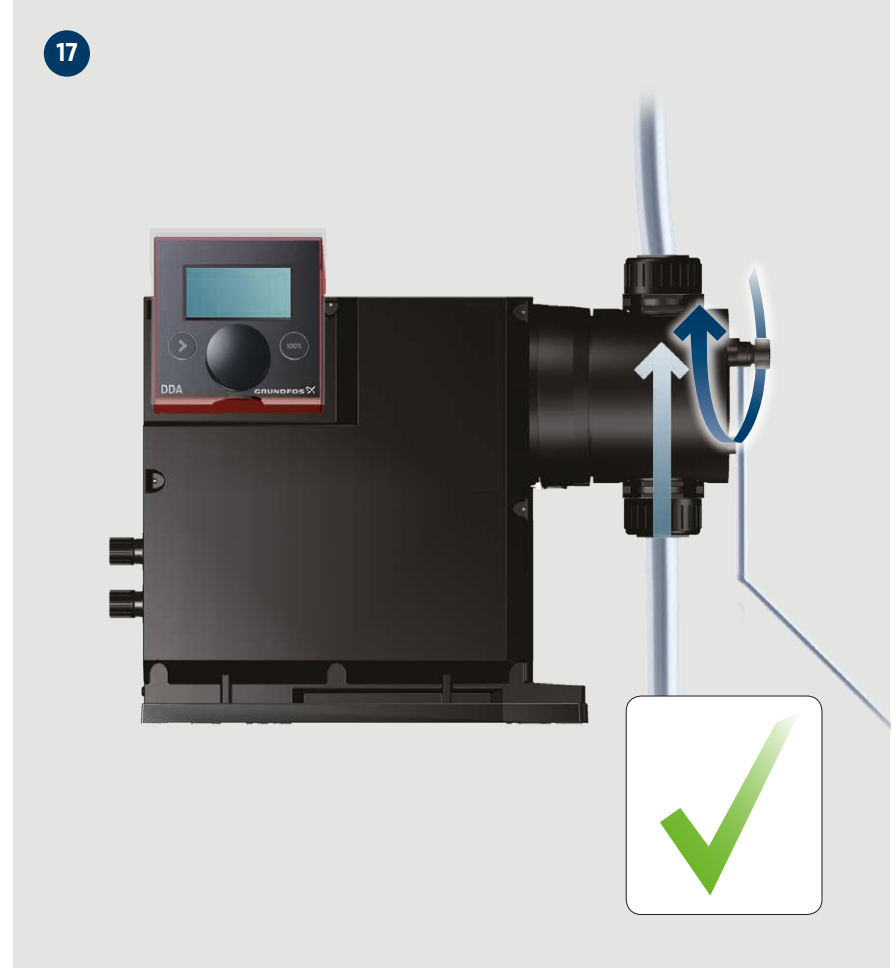
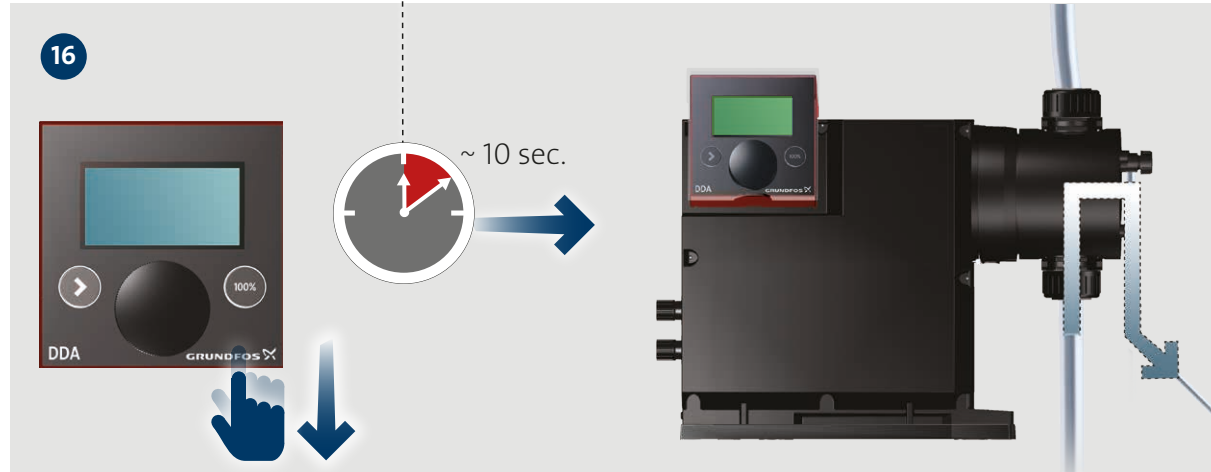
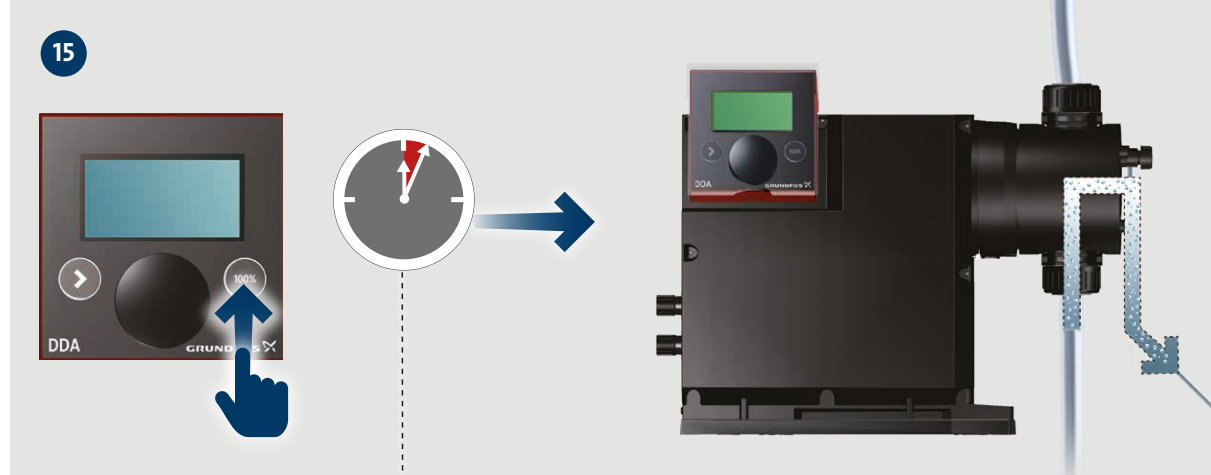
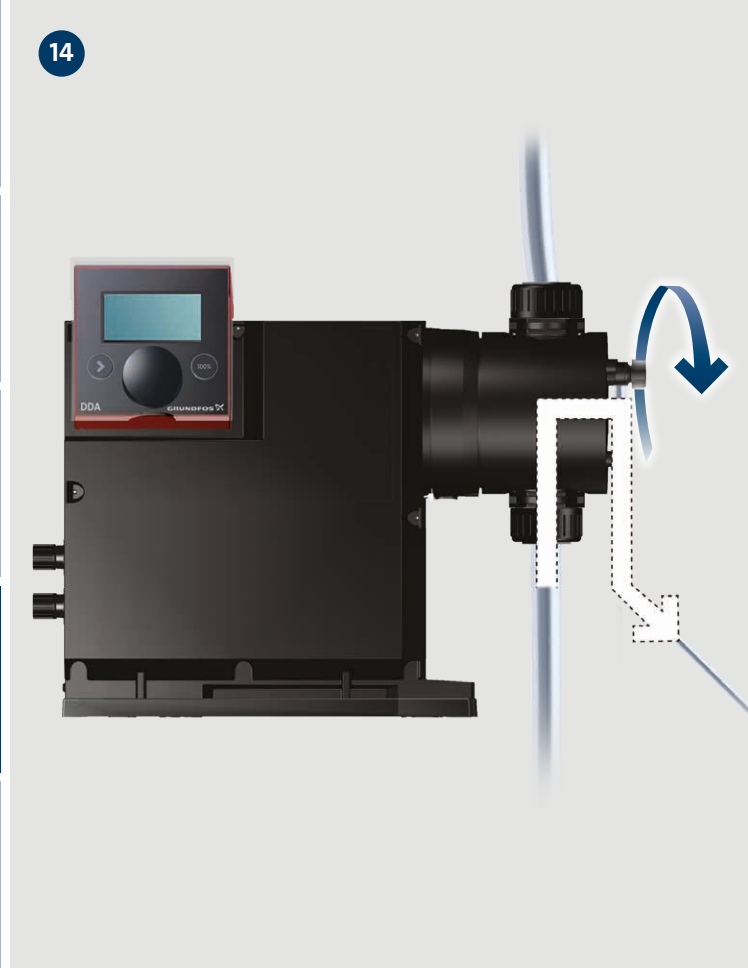
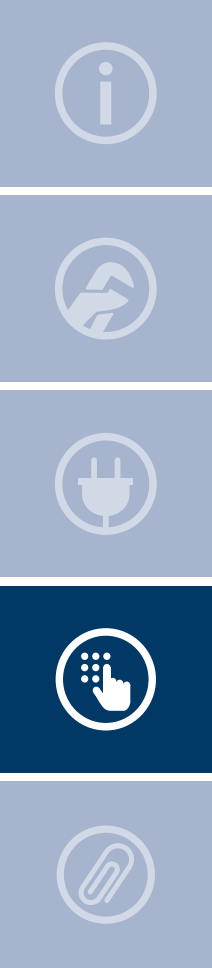






13



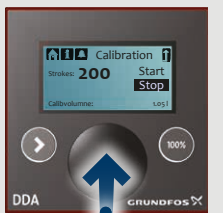
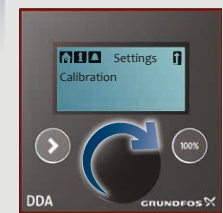




18



V1 e.g. 2.5 l

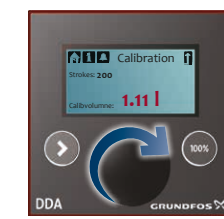


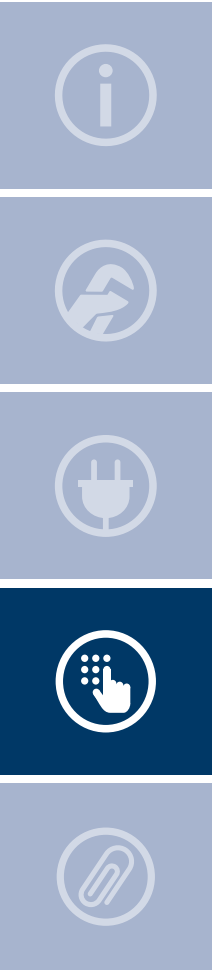
V2 e.g. 1.39 l



V1 - V2

e.g. 2.5 l - 1.39 l = 1.11 l



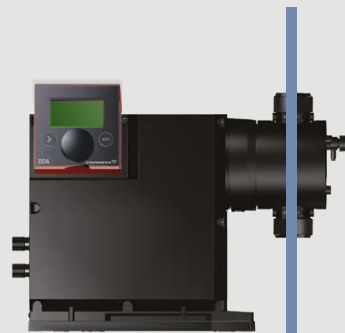


19

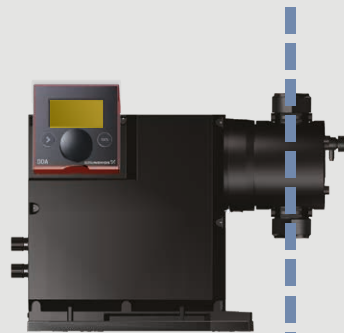
Ok



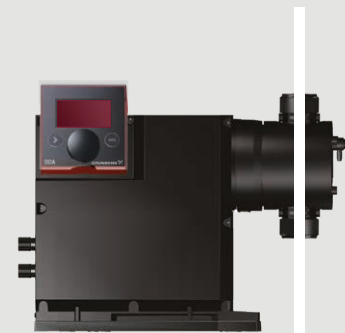
Ok

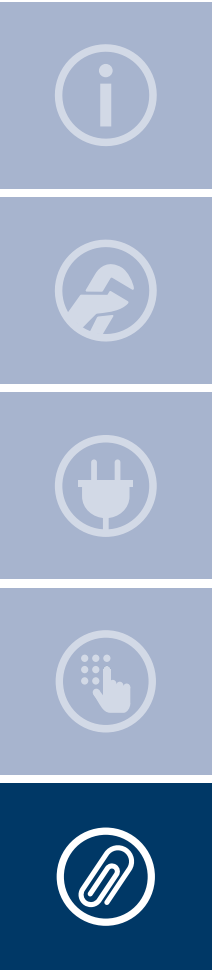


Warning



Alarm





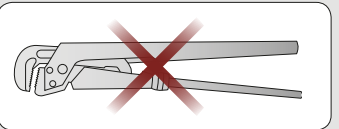
Service kit catalogue
net.grundfos.com/qr/i/96488862_23

1



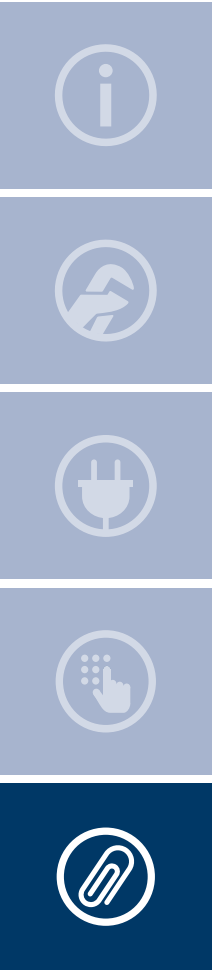
Installation and operating instructions DDA
net.grundfos.com/qr/i/98767821

2



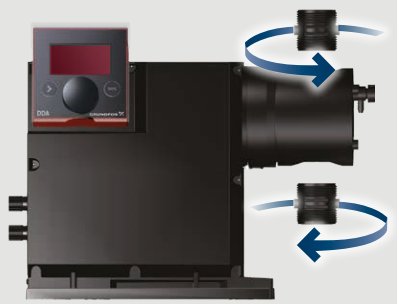
= 0 bar (0 psi)



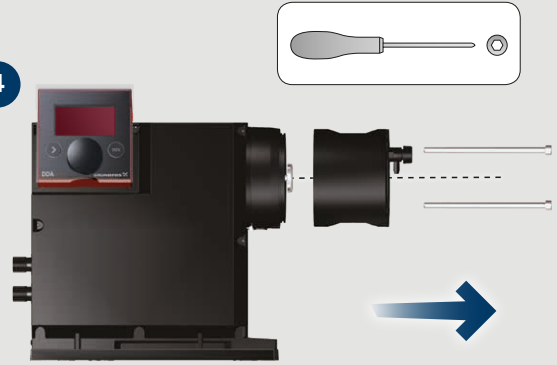


DDA 60-10

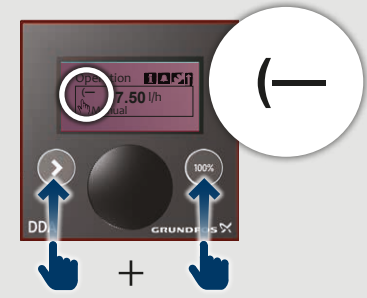
3



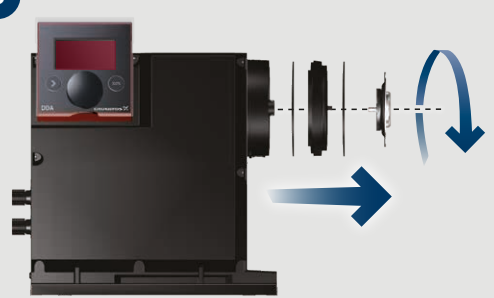
4



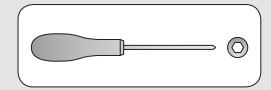
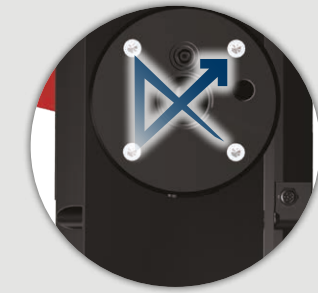
5



6



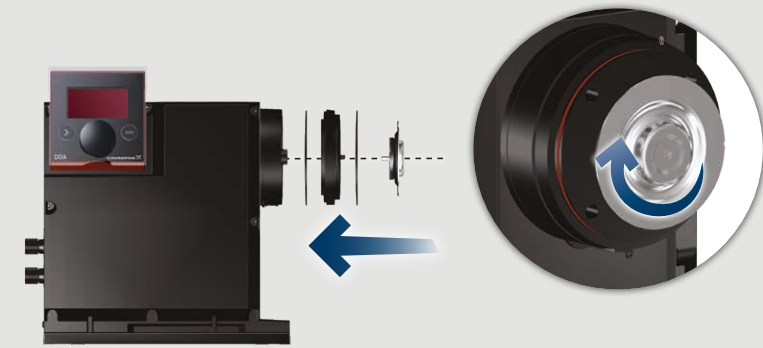
9



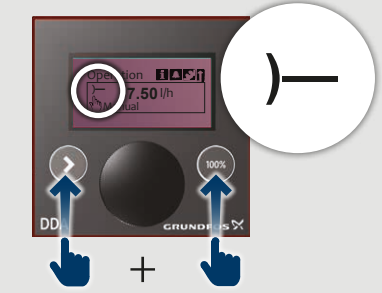
6 (+1) Nm
(4.4 (+0.7) lb/ft)

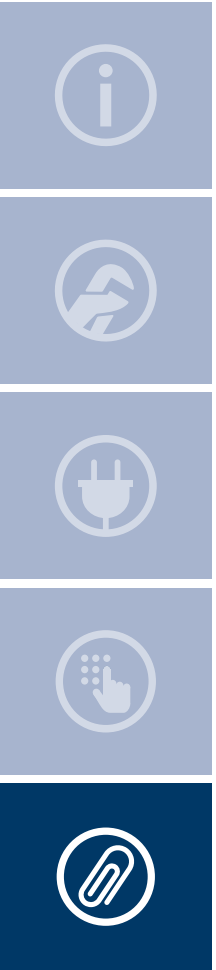


7



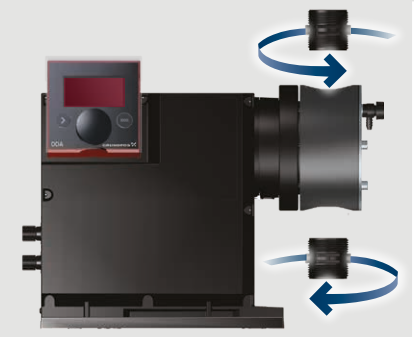
8



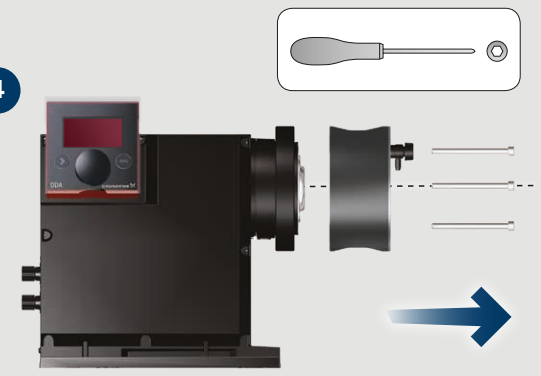


DDA 120-7 / DDA 200-4

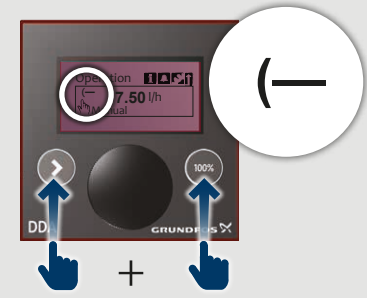
3



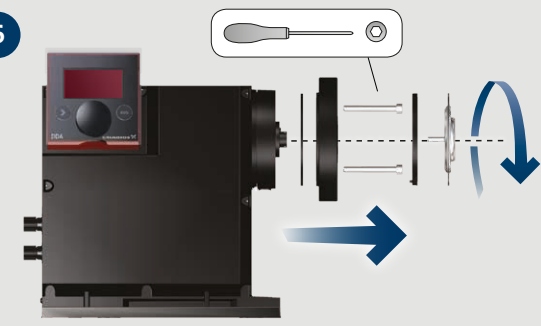
4



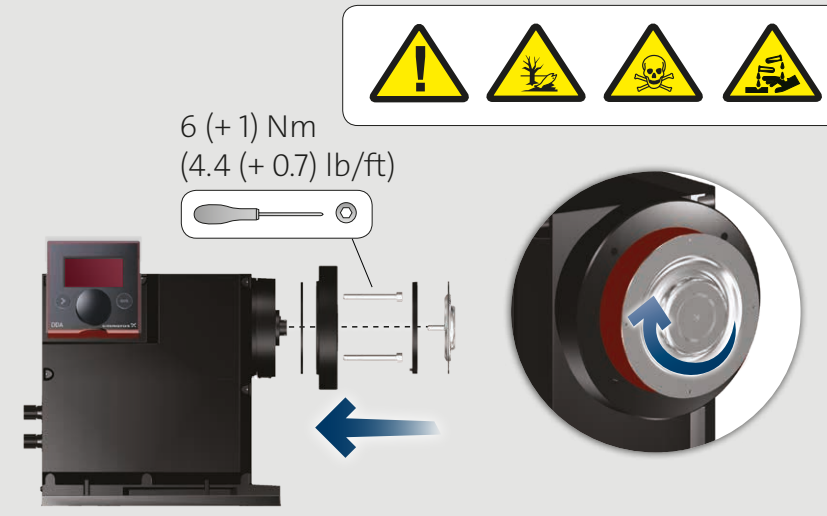
5



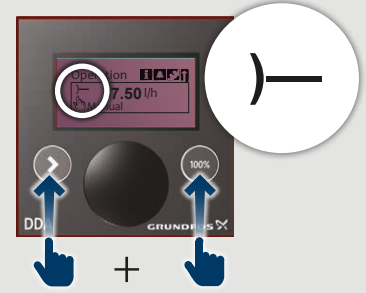
6



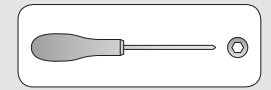
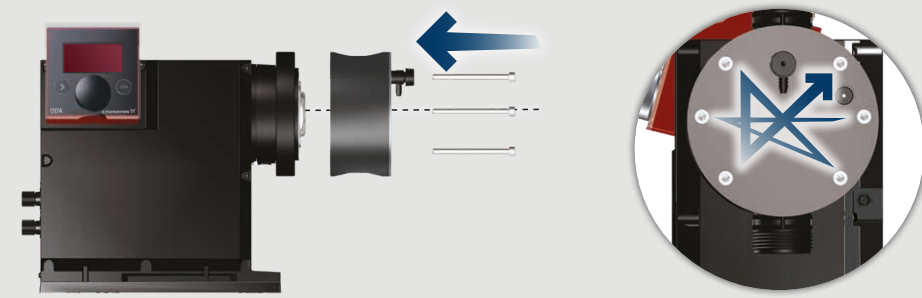
7



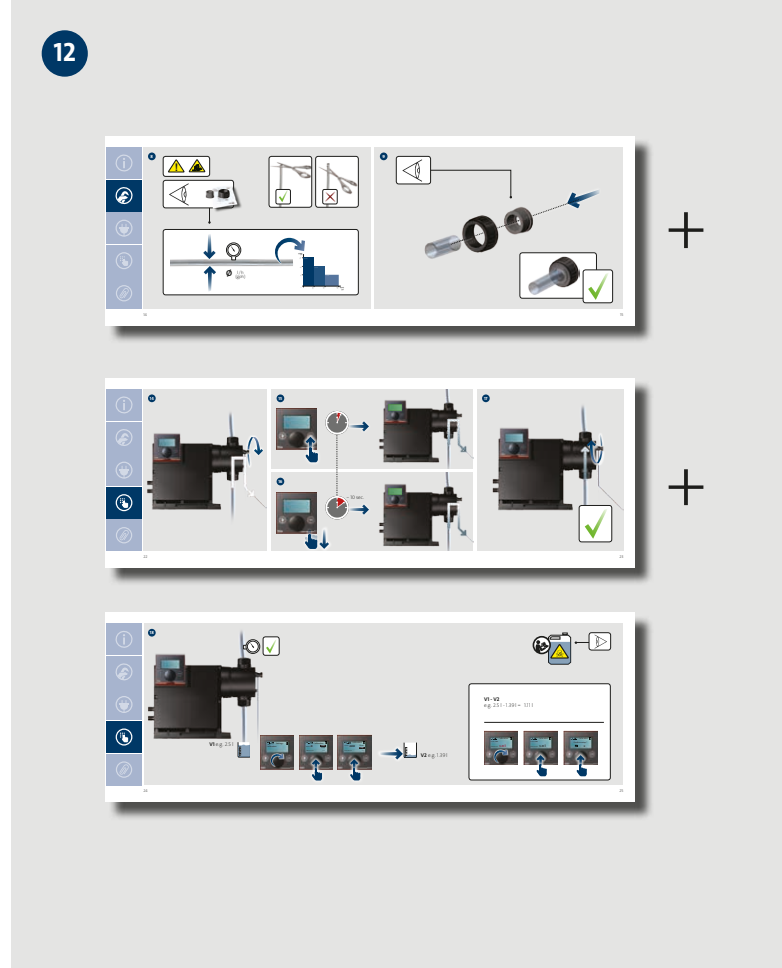
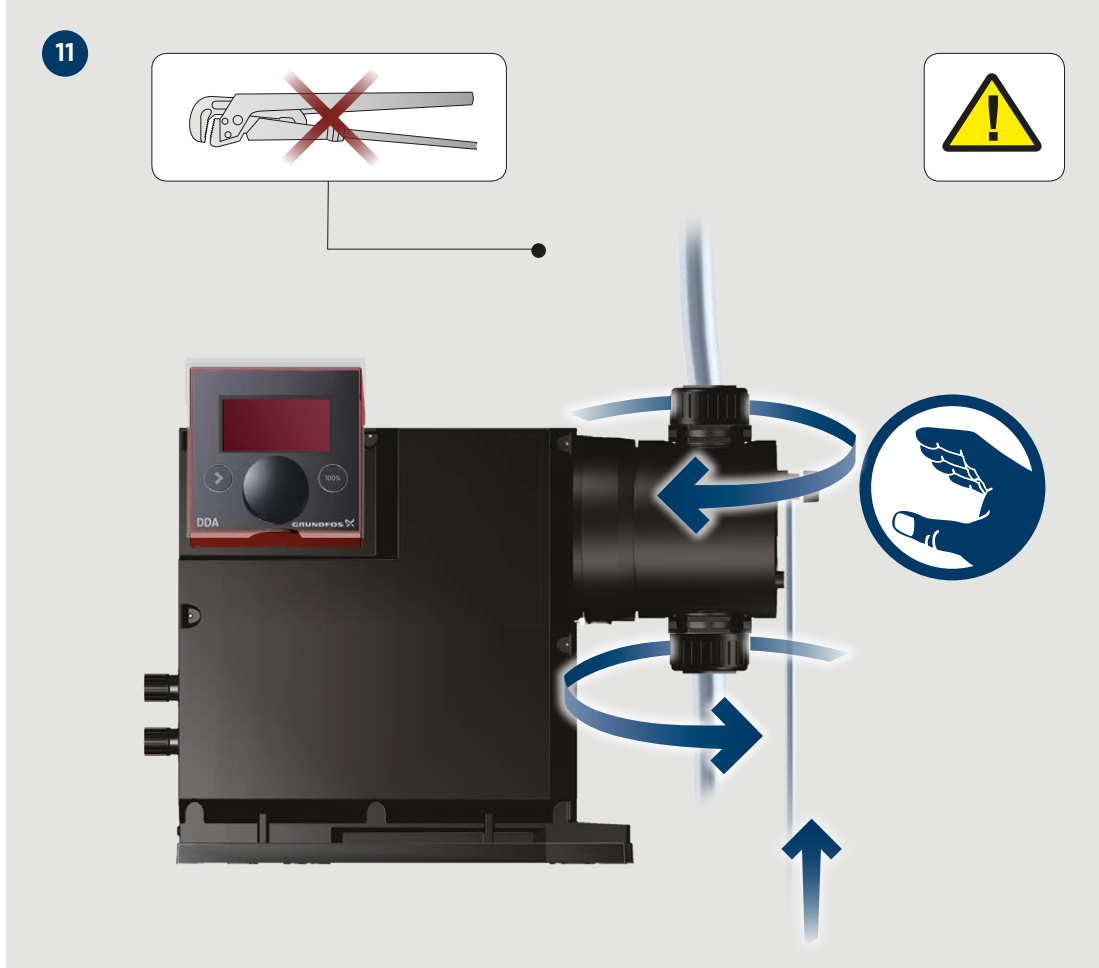
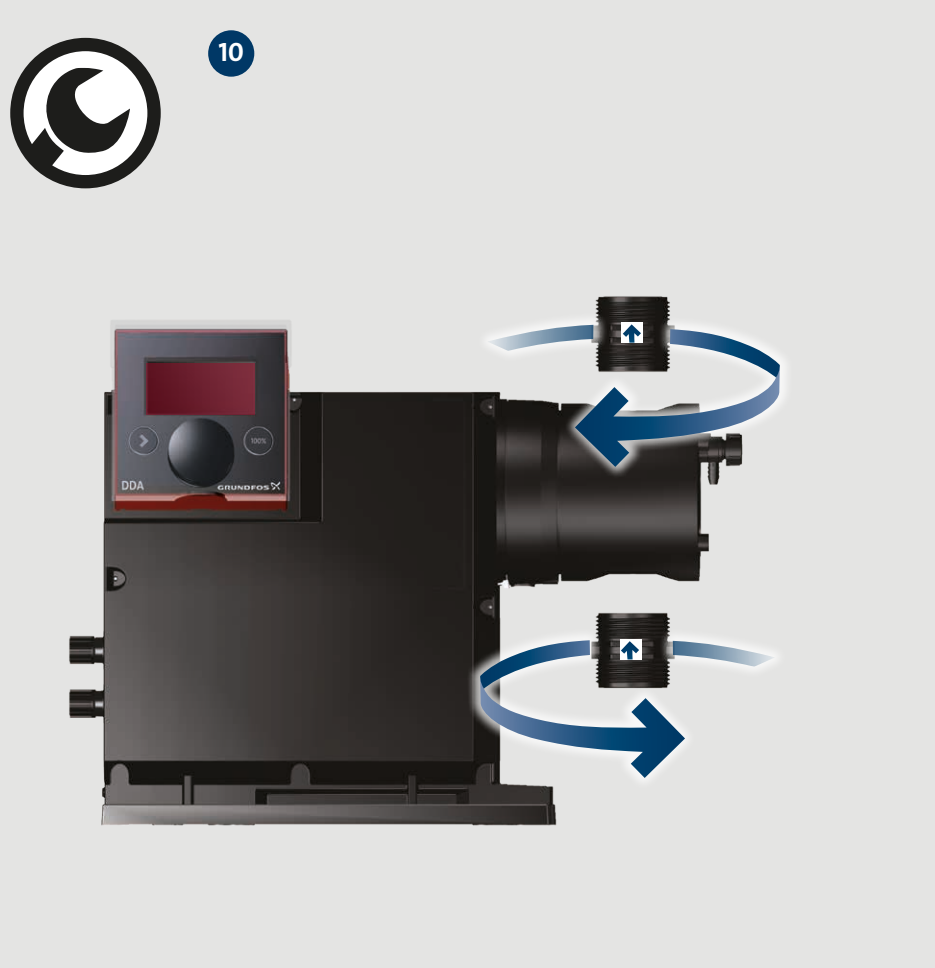
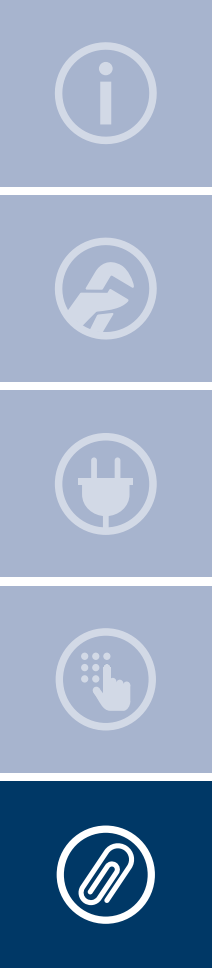
8



9



6 (+1) Nm
(4.4 (+0.7) lb/ft)



be think innovate

99021884 1018

ECM: 1242871

GRUNDFOS Holding A/S
Poul Due Jensens Vej 7
DK-8850 Bjerringbro
Tel: +45 87 50 14 00
www.grundfos.com

Pumpland.ru

GRUNDFOS 

Trademarks displayed in this material, including but not limited to Grundfos, the Grundfos logo and "be think innovate" are registered trademarks owned by The Grundfos Group. All rights reserved.
© 2018 Grundfos Holding A/S, all rights reserved.