



# Removal of **TRANSPORT BRACKET**

## and mounting of **MOTOR**

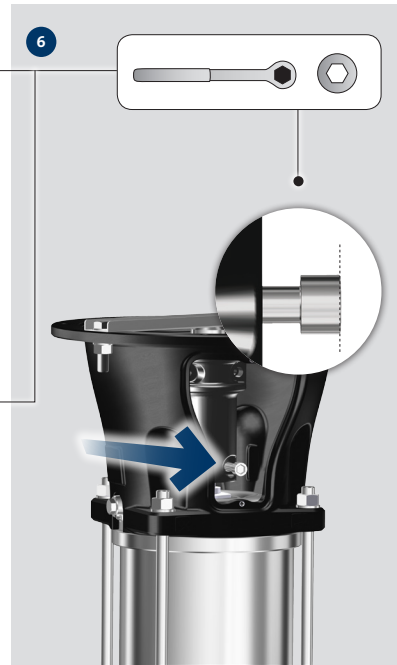
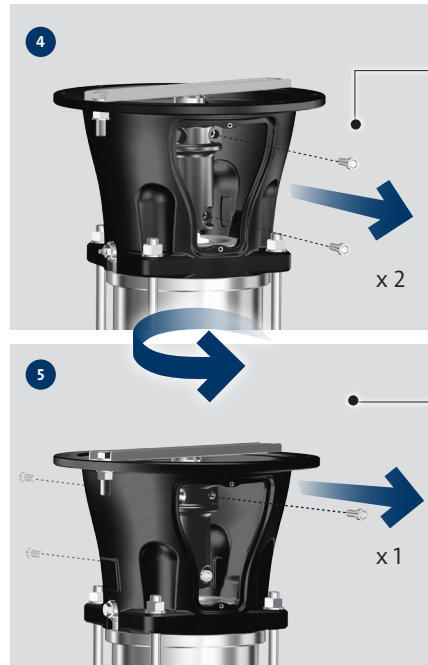
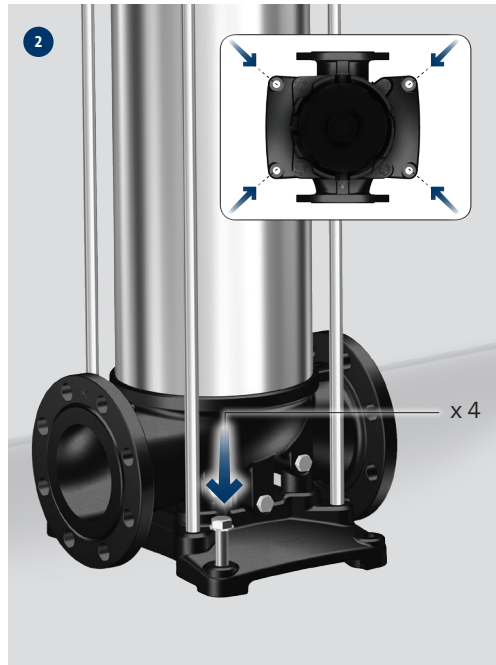
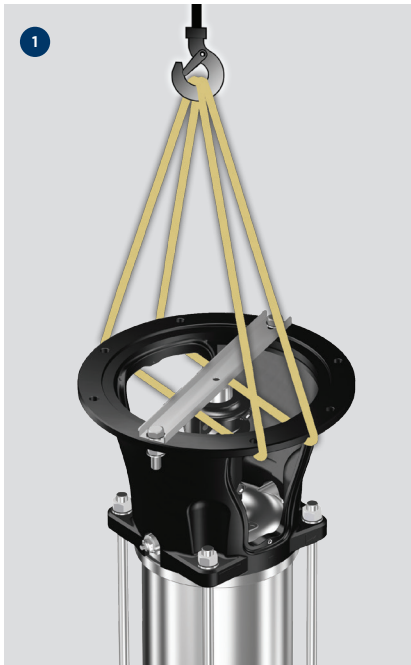
Further product  
documentation

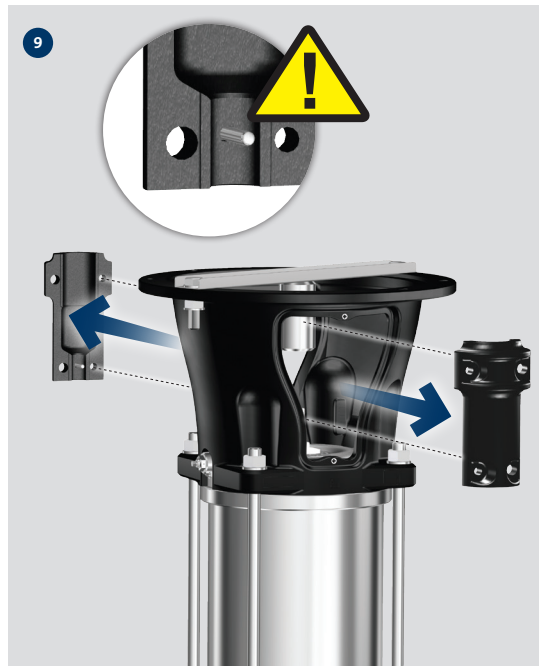


[net.grundfos.com/qr/i/99078486](https://net.grundfos.com/qr/i/99078486)

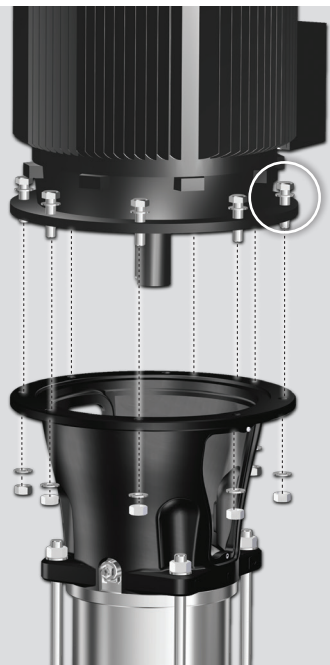
be  
think  
innovate

**GRUNDFOS** 

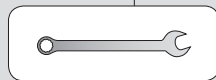




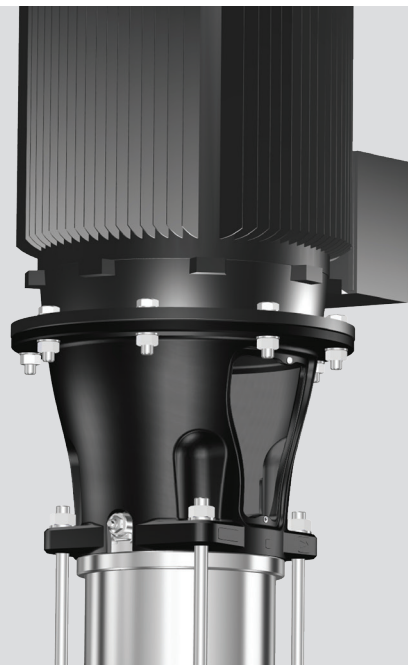
12

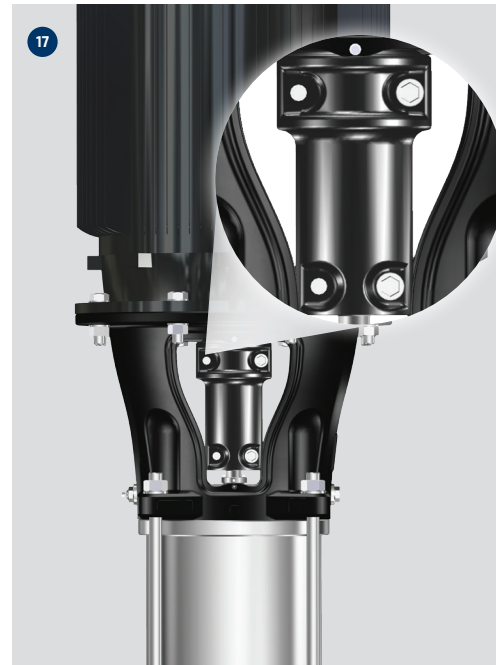
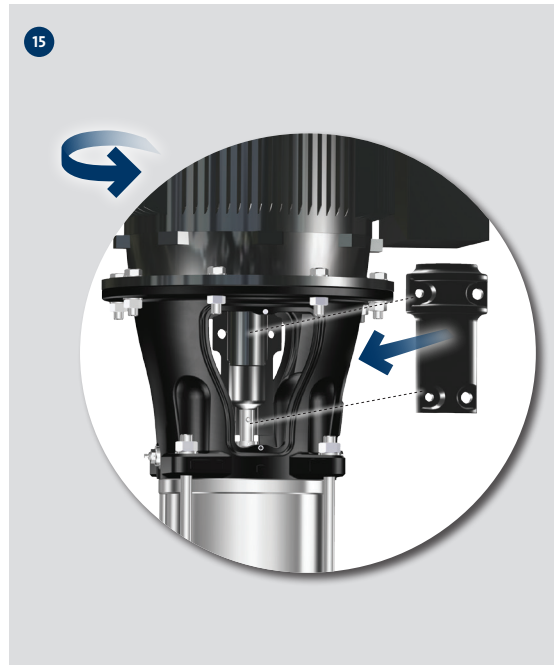
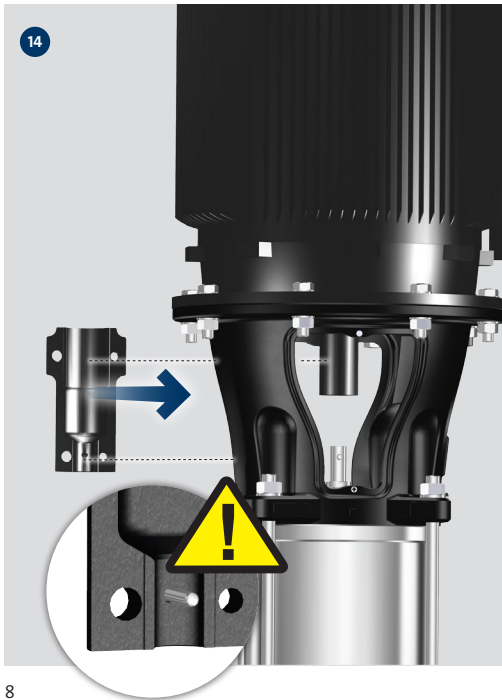


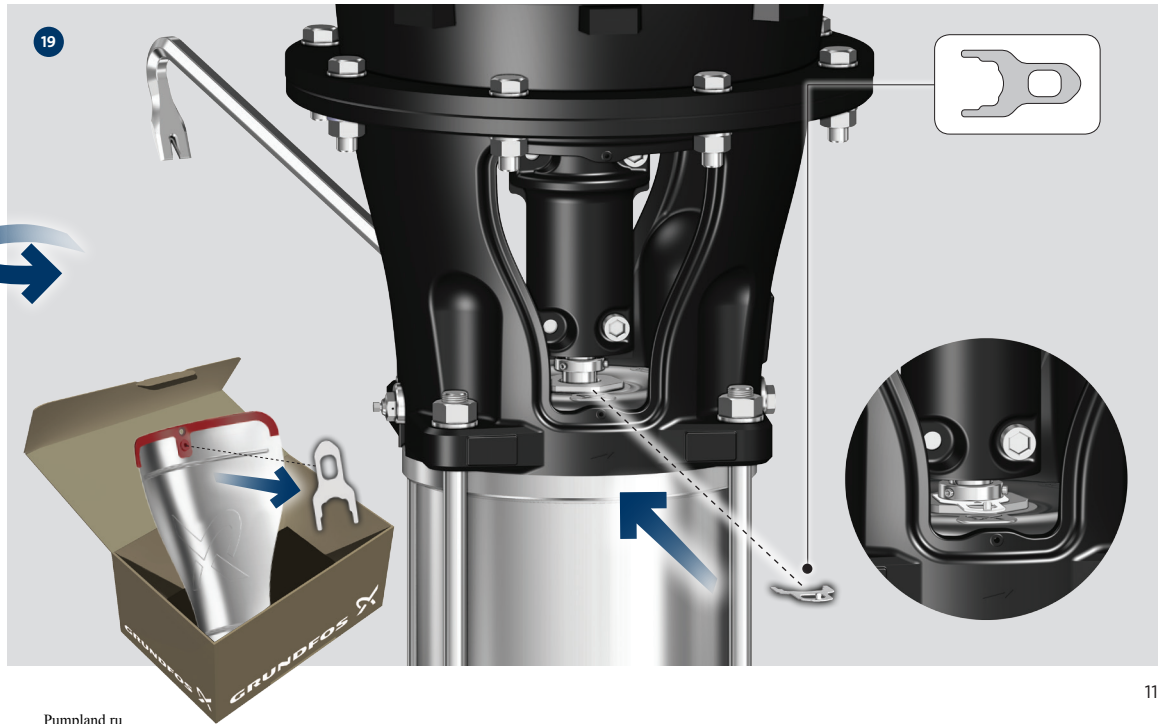
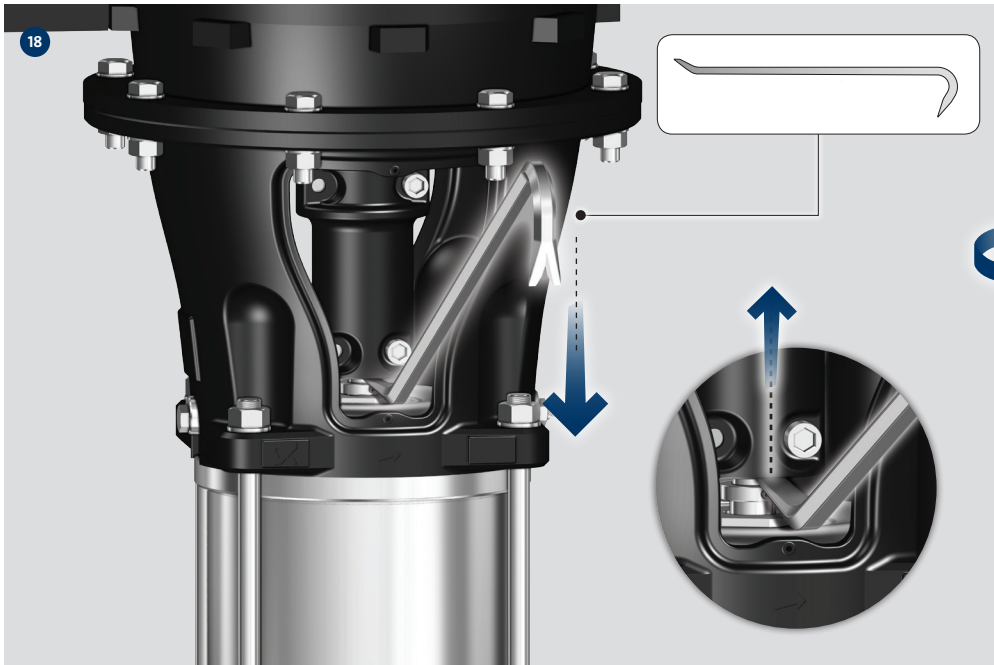
Dimension (thread)	Torque [Nm/lb-ft]	Lubricant
M12 (½")	40/30	Thread-Eze
M16(5/8")	80/60	
M20(¾")	150/110	

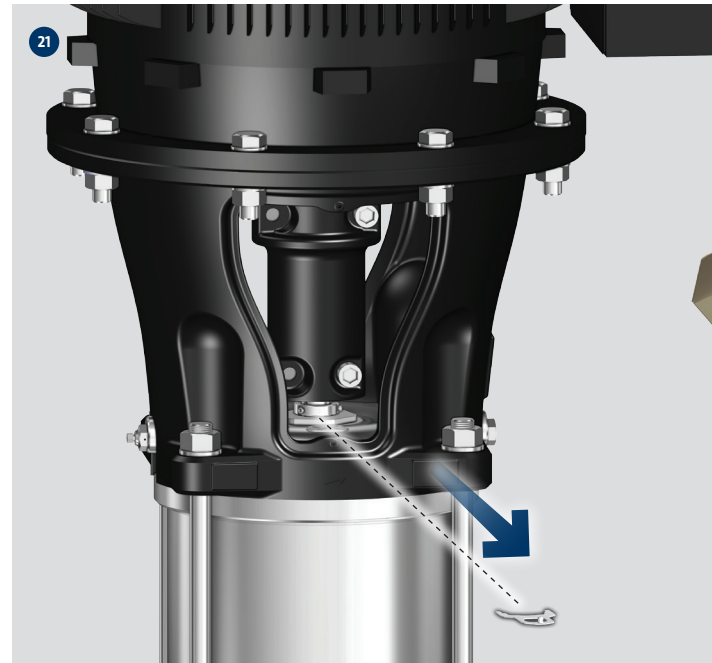
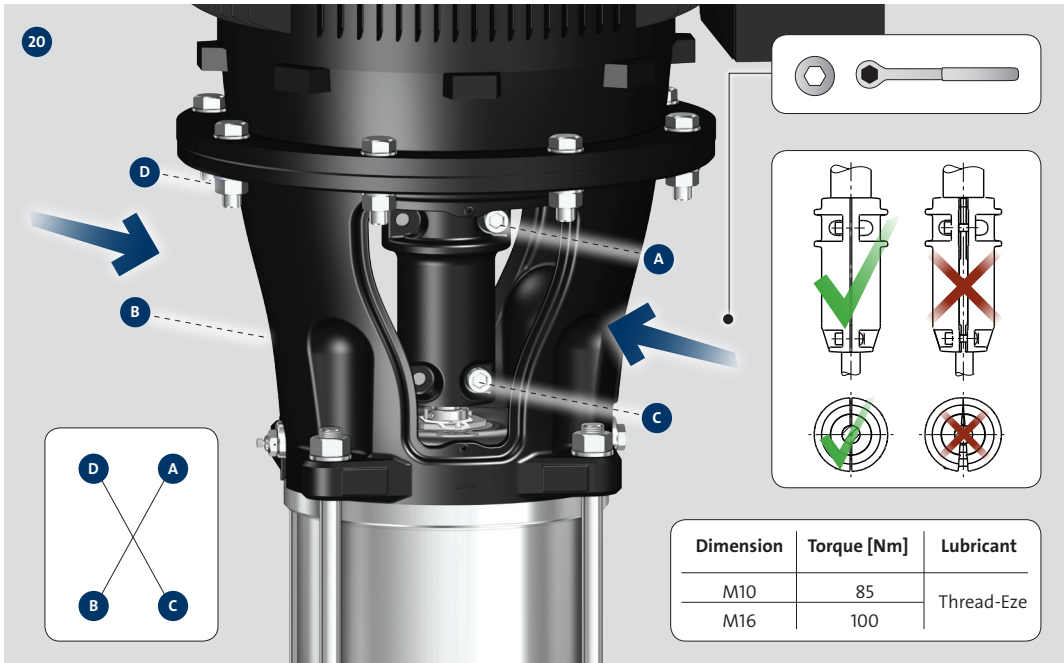


13

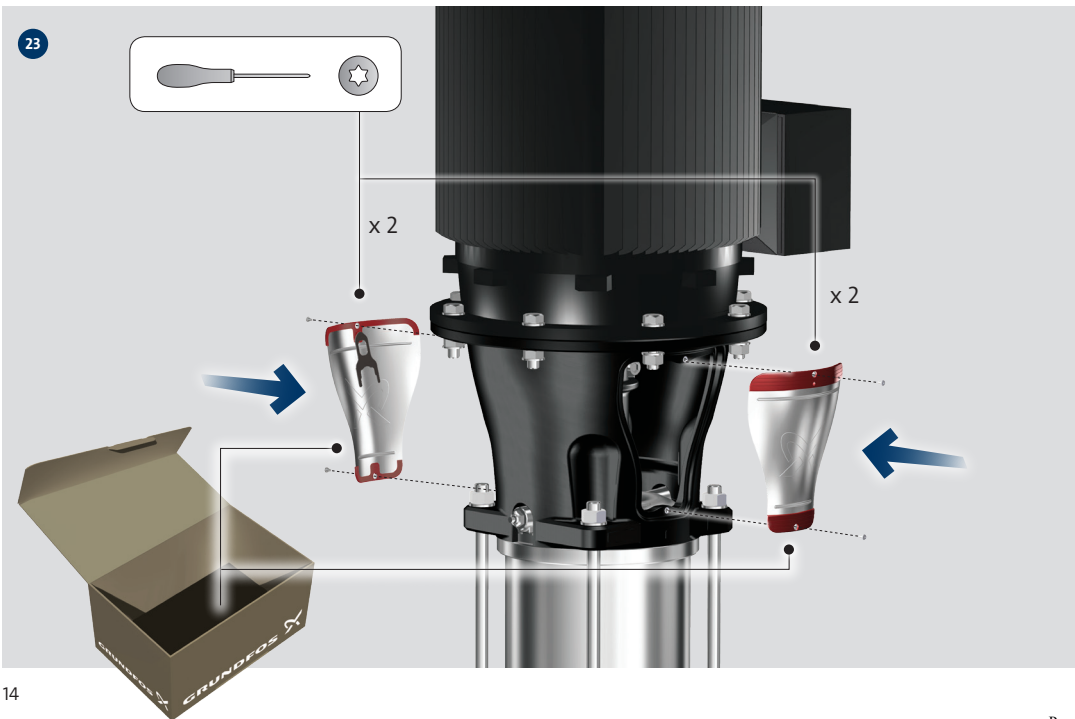








23



14

24



Serviceinstruction  
  
[net.grundfos.com/qr/i/99233360](http://net.grundfos.com/qr/i/99233360)

15



be think innovate

---

99110859 0917

ECM: 1185932

**GRUNDFOS Holding A/S**  
Poul Due Jensens Vej 7  
DK-8850 Bjerringbro  
Tel: +45 87 50 14 00  
[www.grundfos.com](http://www.grundfos.com)

Pumpland.ru

**GRUNDFOS** 

The name Grundfos, the Grundfos logo, and be think, innovate are registered trademarks owned by Grundfos Holding A/S or Grundfos A/S, Denmark. All rights reserved worldwide.