

110. Recommended spare parts: TP, TPE, TPD, TPED

50/60 Hz, Series 100/200

Customer Information

| | |
|-------------------|----------------------------|
| Project title: | Customer name: |
| Reference number: | Customer number: |
| Customer contact: | Customer phone number: () |
| | Fax number: () |

Pump information

Type CE

Model

Q m³/h H m n min⁻¹

p/t Bar/ °C_{MAX}

GRUNDFOS

Quotation made by

Company name:

Prepared by:

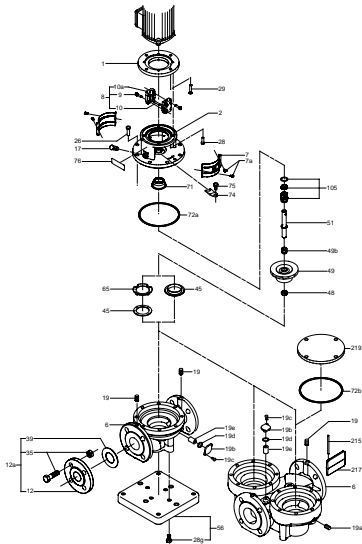
Phone number: ()

Fax number: ()

Date: Page 1 of:

Quote number:

Recommended spare parts



| Spare part/service kit | Recommended spare parts/service kits for... | | |
|------------------------|---|-------------------|----------------------------|
| | 2 years operation | 5 years operation | Product number of part/kit |
| Shaft seals | 1 kit | 2 kits | |
| Wear parts | 1 kit | 2 kits | |
| | | | |

Recommended spare parts: TP, TPE, TPD, TPED

50/60 Hz, Series 300

Customer Information

| | |
|-------------------|----------------------------|
| Project title: | Customer name: |
| Reference number: | Customer number: |
| Customer contact: | Customer phone number: () |
| | Fax number: () |

Pump information

| | | | | | |
|----------|---|----|------------------------|---|--|
| Type | <input type="text"/> | CE | | | |
| Model | <input type="text"/> | | | | |
| Q | <input type="text"/> m ³ /h | H | <input type="text"/> m | n | <input type="text"/> min ⁻¹ |
| p/t | <input type="text"/> Bar/ °C _{MAX} | | | | |
| GRUNDFOS | | | | | |

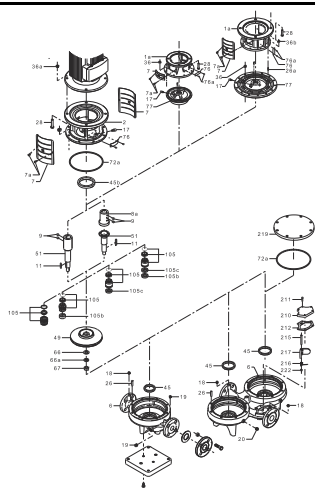
Quotation made by

Company name:
 Prepared by:
 Phone number: ()
 Fax number: ()
 Date:

Page 1 of:

Quote number:

Recommended spare parts



| Spare part/service kit | Recommended spare parts/service kits for... | | |
|----------------------------------|---|-------------------|----------------------------|
| | 2 years operation | 5 years operation | Product number of part/kit |
| Shaft seals | 1 kit | 2 kits | |
| O-ring kit | 1 kit | 2 kits | |
| Wear ring, pump housing | 1 kit | 2 kits | |
| Wear ring, cover | 1 kit | 2 kits | |
| Shaft | - | 1 kit | |
| Impeller | - | 1 pcs | |
| Nut, key and washer for impeller | - | 1 kit | |