

51. MTH/MTC

MTH/MTC 2, 4

50/60 Hz

Metal terminal box

Pos.	Models	All
	Kit No	405179
Description		
164a	Terminal box with gasket	1
164	Terminal box cover with gasket	1
166	Screw	4
175	Screw	4
176	Terminal complete	1

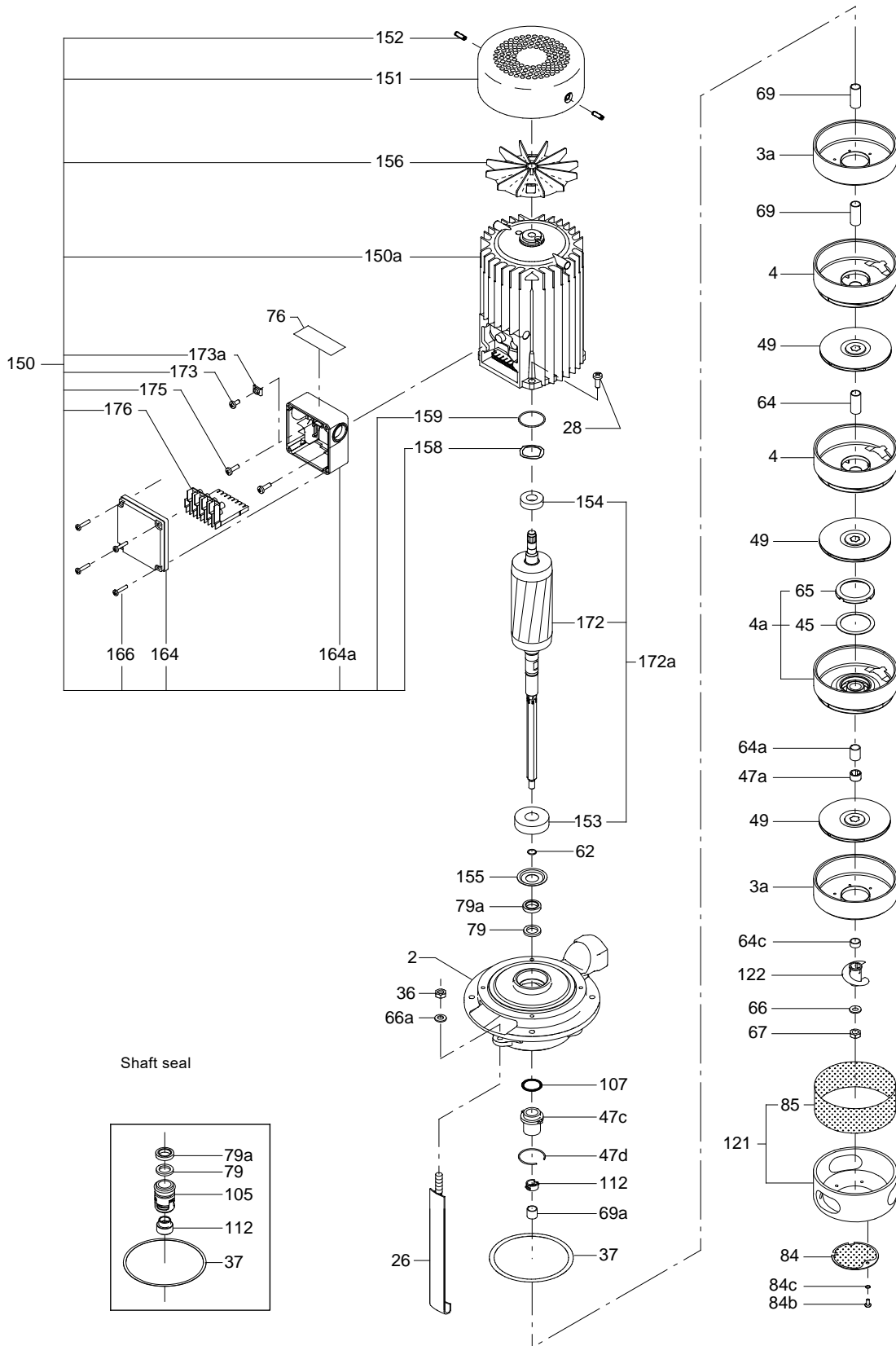
Shaft seal

Pos.	Kit No	MTH/C 2, 4	
		435045	98455535
		AUUV	AQVQ
Description			
37	Gasket	1	1
79	Thrower	1	1
79a	Lip seal	1	1
105	Shaft seal	1	1

Wear parts

Pos.	Kit No	MTH/C 2-30	MTH/C 2-50	MTH/C 4-20	MTH/C 4-40
		MTH/C 2-40	MTH/C 2-60		MTH/C 4-30
			MTH/C 2-90		MTH/C 4-60
			MTH/C 2-100		MTH/C 4-80
			MTH/C 2-110		
		435032	435033	445057	445058
Description					
4a	Bearing chamber	-	1	-	1
36	Nut	3	3	3	3
37	Gasket	1	1	1	1
45	Neck ring	4	5	-	-
47a	Bearing ring	-	1	-	1
62	Stop ring	1	1	1	1
64a	Spacing pipe 7.8 mm	1	1	-	-
65	Neck ring retainer	4	5	-	-
66	Spring washer	1	1	1	1
66a	Washer	3	3	3	3
67	Lock nut	1	1	1	1
122	Priming screw	1	1	-	-

MTH/MTC 2, 4



TM02 5297 2502q

MTH, MTC 8, 12, 16**Metal terminal box**

Models		
Pos.	Kit No	MG 71/80
Description		
164a	Terminal box with gasket	1
164	Terminal box cover with gasket	1
166	Screw	4
175	Screw	4
176	Terminal complete	1

Shaft seal

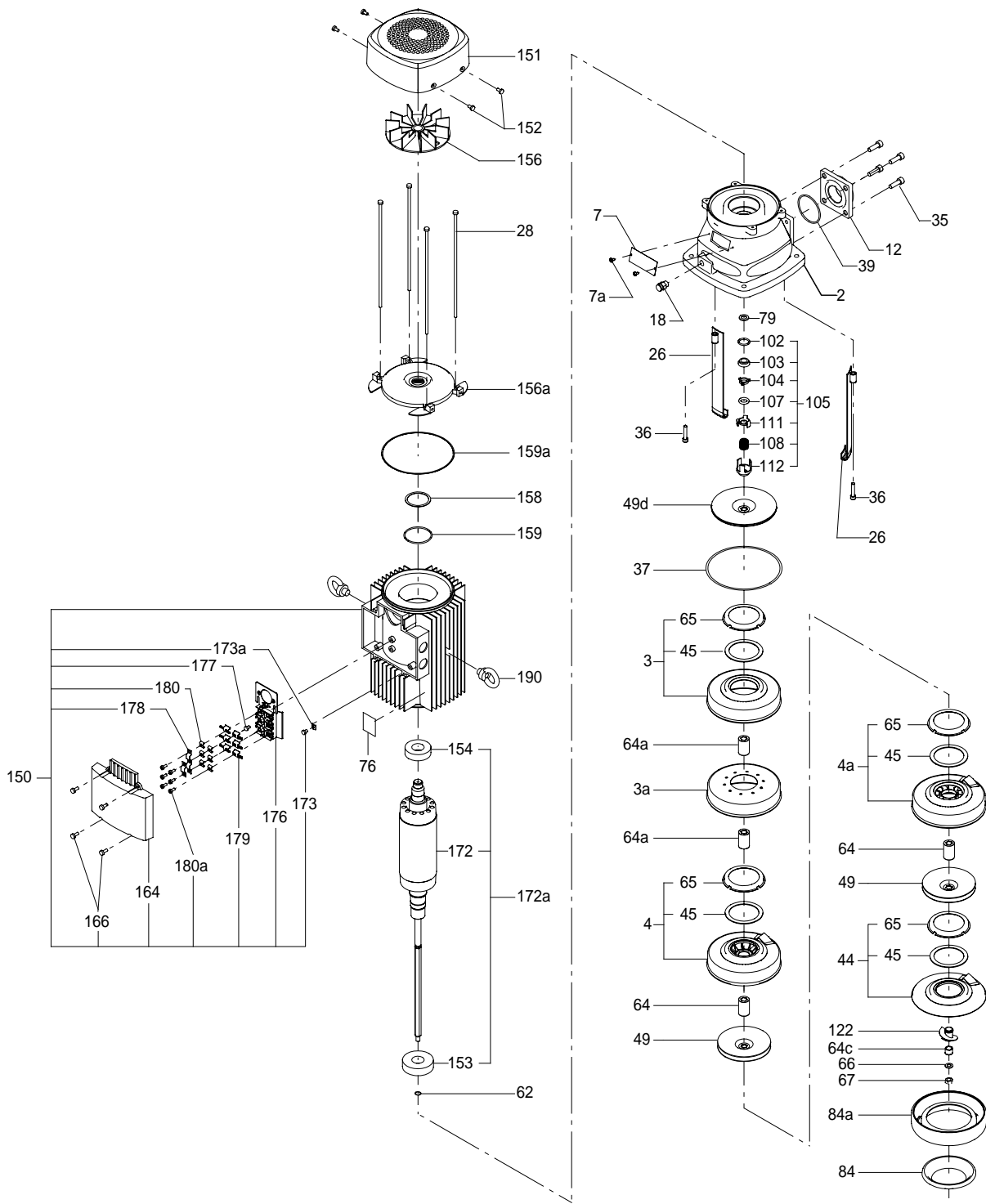
MTH/MTC 8, 12, 16		
Pos.	Kit No	96431994
Description		
AUUV		
37	O-ring, for pumps manufactured after 0643 (yyww)	1
105	Shaft seal complete	1

Wear parts

		MTH/MTC 8/12	MTH/MTC 16
Pos.	Kit No	96435991	96435992
Description			
4a	Bearing chamber	1	1
37	Gasket 145/138 x 0.25	1	1
45	Neck ring	7	4
45b	Neck ring	-	1
49c	Impeller wear ring	-	4
64	29 mm	6	-
	28.5 mm	4	3
64a	Spacing 30 mm	6	5
64b	pipe 15 mm	-	4
64c	10.5 mm	-	1
64d	10 mm	-	1
65	Neck ring retainer	7	4
65a	Neck ring retainer	-	1
66	Spring washer	1	1
67	Lock nut, M8	1	1
69	Spacing pipe 5.8 mm	-	1

MTH, MTC 8, 12, 16

MTH, MTC 8, 12, 16 MTH/MTC



TM01 6378 4300