

Service Parts Catalogue

CR, CRN 95 to 255



be
think
innovate

GRUNDFOS 

Pumpland.ru

1. CR, CRN 95 to 255	3
Kit, coupling guard	3
Kit, coupling complete	3
Kit, strap	3
Kit, staybolt	4
Kit, shaft seal	6
Kit, shaft seal wear part $\varnothing 28$, $\varnothing 36$	7
Kit, impeller	7
Impeller with reduced diameter for chamber with bush	8
Impeller for chamber with bearing	8
Impeller with reduced diameter for chamber with bearing	8
Kit, plug	9
Kit, O-ring	9
Kit, flange blind	9
Kit, O-ring for thrust handling device	10
Kit, for thrust handling device.	10
Kit, wear part	11
Kit, bearing.	12
Kit, loose flange	12
Kit, bracket for cathode electro deposition cover	13
Spare, sleeve	13
Spare, base	14
Spare, cover.	15
Spare, motor stool	16
Spare, shaft	16
Spare, suction part.	18
Spare, discharge	18
Spare, thrust handling device flange	18
Spare, thrust handling device blind flange	18
Spare, chamber	18
Bulk, impeller, set of 3 pcs.	19
Bulk, impeller with reduced diameter, set of 3 pcs.	20
Bulk, impeller, set of 10 pcs.	20
Bulk, impeller with reduced diameter, set of 10 pcs.	20
Bulk, chamber, set of 3 pcs.. . . .	21
Bulk, chamber, set of 10 pcs.. . . .	22
Bulk, nut for hub, set of 3 pcs.	23
Bulk, nut for hub, set of 10 pcs.	23
Bulk, split cone, set of 3 pcs.	23
Bulk, split cone, set of 10 pcs.	23
Bulk, nut for staybolt, set of 4 pcs.	24
Bulk, washer for staybolt, set of 4 pcs.	24
Bulk, head socket screw for thrust handling device flange, set of 4 or 6 pcs.	24
Bulk, washer for thrust handling device flange, set of 4 or 6 pcs.	24
Bulk, O-ring for thrust handling device blind flange, set of 2 pcs.	24
2. Exploded view	25
Pumps with $\varnothing 22$ shaft and without thrust-handling device	25
Pumps with $\varnothing 28$ or $\varnothing 36$ shaft and without thrust-handling device	26
Pumps with $\varnothing 28$ or $\varnothing 36$ shaft and with thrust-handling device	27
3. Recommended spare parts: CR, CRN 95 to 255	28

1. CR, CRN 95 to 255

Kit, coupling guard

Pos	Frame size	FF265-350	FF350-400	FF400-600	FF500-600
	Kit No	99196379	99196380	99196381	99196382
7	Coupling guard	1	1	1	1
7a	Screw	2	2	2	2
7b	Lock washer	2	2	2	2

Kit, coupling complete

Pos	Motor/pump shaft diameter [mm]	38/22	41,275/22	42/22	47,625/22	48/22	55/22
	Standards	IEC	NEMA	IEC	NEMA	IEC	IEC
	Kit no	99190032	99190033	99190035	99190037	99190038	99190039
10a	Coupling complete	1	1	1	1	1	1
9	Hex head screw	4	4	4	4	4	4
10	Shaft pin	1	1	1	1	1	1

Pos	Motor/pump shaft diameter [mm]	60/22	65/28	53,975/28	60,325/28	65/36	60,325/36
	Standards	IEC	IEC	NEMA	NEMA	IEC	NEMA
	Kit no	99190040	99190041	99190042	99190043	99190044	99190045
10a	Coupling complete	1	1	1	1	1	1
9	Hex head screw	4	4	4	4	4	4
10	Shaft pin	1	1	1	1	1	1

Kit, strap

CR, CRN 95

Pos	Pump size	CR, CRN 95	CR, CRN 95	CR, CRN 95	CR, CRN 95	CR, CRN 95	CR, CRN 95
	Number of stages	1	2	3	4	5	6
	Kit no	99190046	99190047	99190048	99190049	99190050	99190051
26a	Strap	1	1	1	1	1	1
26c	Washer	1	1	1	1	1	1
26b	Hex head screw	1	1	1	1	1	1

Pos	Pump size	CR, CRN 95	CR, CRN 95	CRN 95	CRN 95	CRN 95	CRN 95
	Number of stages	7	8	9	10	11	12
	Kit no	99190052	99190053	99190054	99190055	99190056	99190057
26a	Strap	1	1	1	1	1	1
26c	Washer	1	1	1	1	1	1
26b	Hex head screw	1	1	1	1	1	1

CR, CRN 125, 155

Pos	Pump size	CR, CRN 125, 155	CR, CRN 125, 155	CR, CRN 125, 155	CR, CRN 125, 155	CR, CRN 125, 155	CR, CRN 125, 155
	Number of stages	1	2	3	4	5	6
	Kit no	99190058	99190059	99190060	99190061	99190062	99190063
26a	Strap	1	1	1	1	1	1
26c	Washer	1	1	1	1	1	1
26b	Hex head screw	1	1	1	1	1	1

Pos	Pump size	CRN 125, 155	CRN 125, 155	CRN 125, 155	CRN 125, 155	CRN 125, 155	CRN 125, 155
	Number of stages	7	8	9	10	11	12
	Kit no	99190064	99190065	99190066	99190067	99190068	99190069
26a	Strap	1	1	1	1	1	1
26c	Washer	1	1	1	1	1	1
26b	Hex head screw	1	1	1	1	1	1

CR, CRN 185, 215, 255

Pos	Pump size	CR, CRN 185-255	CR, CRN 185-255	CR, CRN 185-255	CR, CRN 185-255	CRN 185-255	CRN 185-255	CRN 185-255	CRN 185-255
	Number of stages	2	3	4	5	6	7	8	9
	Kit no	99190070	99190071	99190072	99190073	99190074	99190075	99190076	99190077
26a	Strap	1	1	1	1	1	1	1	1
26c	Washer	1	1	1	1	1	1	1	1
26b	Hex head screw	1	1	1	1	1	1	1	1

Kit, staybolt**CR, CRN 95**

Pos	Pump size	CR,CRN 95	CR,CRN 95	CR,CRN 95	CR,CRN 95	CR,CRN 95	CR,CRN 95	CR,CRN 95	CR,CRN 95
	Thread size/PN	M16 PN30	M16 PN30	M16 PN30	M16 PN30	M16 PN30	M16 PN30	M16 PN30	M16 PN30
	Number of stages	1	2	3	4	5	6	7	8
	Kit no	99190078	99190079	99190080	99190081	99190082	99190083	99190084	99190085
26	Staybolt	1	1	1	1	1	1	1	1
36	Nut	1	1	1	1	1	1	1	1
66a	Washer	1	1	1	1	1	1	1	1

CRN 95

Pos	Pump size	CRN 95	CRN 95	CRN 95	CRN 95	CRN 95	CRN 95
	Thread size/PN	M20 PN40	M20 PN40	M20 PN40	M20 PN40	M20 PN40	M20 PN40
	Number of stages	1	2	3	4	5	6
	Kit no	99190086	99190087	99190088	99190089	99190090	99190091
26	Staybolt	1	1	1	1	1	1
36	Nut	1	1	1	1	1	1
66a	Washer	1	1	1	1	1	1

Pos	Pump size	CRN 95	CRN 95	CRN 95	CRN 95	CRN 95	CRN 95
	Thread size/PN	M20 PN40	M20 PN40	M20 PN40	M20 PN40	M20 PN40	M20 PN40
	Number of stages	7	8	9	10	11	12
	Kit no	99190092	99190093	99190094	99190095	99190096	99190097
26	Staybolt	1	1	1	1	1	1
36	Nut	1	1	1	1	1	1
66a	Washer	1	1	1	1	1	1

CR, CRN 125, 155

Pos	Pump size	CR,CRN 125, 155	CR,CRN 125, 155	CR,CRN 125, 155	CR,CRN 125, 155	CR,CRN 125, 155	CR,CRN 125, 155
	Thread size/PN	M20 PN30	M20 PN30	M20 PN30	M20 PN30	M20 PN30	M20 PN30
	Number of stages	1	2	3	4	5	6
	Kit no	99190098	99190099	99190100	99190101	99190102	99190103
26	Staybolt	1	1	1	1	1	1
36	Nut	1	1	1	1	1	1
66a	Washer	1	1	1	1	1	1

CRN, 125, 155

Pos	Pump size	CRN 125, 155	CRN 125, 155	CRN 125, 155	CRN 125, 155	CRN 125, 155	CRN 125, 155
	Thread size/PN	M24 PN40	M24 PN40	M24 PN40	M24 PN40	M24 PN40	M24 PN40
	Number of stages	1	2	3	4	5	6
	Kit no	99190105	99190106	99190107	99190108	99190109	99190110
26	Staybolt	1	1	1	1	1	1
36	Nut	1	1	1	1	1	1
66a	Washer	1	1	1	1	1	1

Pos	Pump size	CRN 125, 155	CRN 125, 155	CRN 125, 155	CRN 125, 155	CRN 125, 155	CRN 125
	Thread size/PN	M24 PN40	M24 PN40	M24 PN40	M24 PN40	M24 PN40	M24 PN40
	Number of stages	7	8	9	10	11	12
	Kit no	99190111	99190112	99190113	99190114	99190115	99190116
26	Staybolt	1	1	1	1	1	1
36	Nut	1	1	1	1	1	1
66a	Washer	1	1	1	1	1	1

CR, CRN 185, 215, 255

Pos	Pump size	CR,CRN 185-255	CR,CRN 185-255	CR,CRN 185-255	CR,CRN 185-255	CR,CRN 185-255
	Thread size/PN	M30 PN40	M30 PN40	M30 PN40	M30 PN40	M30 PN40
	Number of stages	1	2	3	4	5
	Kit no	99190117	99190118	99190119	99190120	99190121
26	Staybolt	1	1	1	1	1
36	Nut	1	1	1	1	1
66a	Washer	1	1	1	1	1

Pos	Pump size	CR,CRN 185-255	CRN 185-215	CRN 185	CRN 185
	Thread size/PN	M30 PN40	M30 PN40	M30 PN40	M30 PN40
	Number of stages	6	7	8	9
	Kit no	99190122	99190123	99190124	99190125
26	Staybolt	1	1	1	1
36	Nut	1	1	1	1
66a	Washer	1	1	1	1

Kit, shaft seal

Pos	Description	Pcs.
105	Shaft seal	1
-	Grinding device, shaft seal	1
-	Emery cloth	1

Shaft diameter Ø22

	Code for shaft seal	Product number
	HQQE	99262346
	HQQE De-olied	99416269
	HQQV	99262347
	HQQV De-olied	99416270
	HQQF	99416271
	HQQK	99416272
	HQQK De-olied	99416293
	HQBE	99262348
	HQBV	99262349
	HQBF	99416294
	HQBK	99416295
	HUBE	99416296
	HUBV	99416297
	HUBF	99416298
	HUBK	99416299
	HUQE	99416300
	HUQE De-olied	99416301
	HUQV	99416302
	HUQV De-olied	99416303
	HUQF	99416304
	HUQK	99416305
	HUQK De-olied	99416306
	HUUE	99416307
	HUUE De-olied	99432288
	HUUV	99416308
	HUUV De-olied	99432289
	HUUK	99416309
	HUUK De-olied	99432290

Shaft diameter Ø28

	Code for shaft seal	Product number
	HQQE	99262350
	HQQE De-olied	99416310
	HQQV	99262351
	HQQV De-olied	99416311
	HQBE	99262352
	HQBV	99262353
	HUBE	99416312
	HUBV	99416313
	HUQV	99416314
	HUQE De-olied	99416315
	HUQV	99416316
	HUQV De-olied	99416317
	HUUE	99416318
	HUUV	99416319

Shaft diameter Ø36

	Code for shaft seal	Product number
	HQQE	99262354
	HQQE De-olied	99416320
	HQQV	99262355
	HQQV De-olied	99416321
	HQBE	99262356
	HQBV	99262357
	HUBE	99416322
	HUBV	99416323
	HUQE	99416324
	HUQE De-olied	99416325
	HUQV	99416326
	HUQV De-olied	99416327
	HUUE	99416328
	HUUV	99416329

Kit, shaft seal wear part Ø28, Ø36

Pos.	Code for shaft seal	HQQE	HQQV	HQBE	HQBV	HQQE	HQQV	HQBE	HQBV
	Shaft seal diameter [mm]	28				36			
	Kit no	99262358	99262359	99262360	99262361	99262362	99262363	99262364	99262365
104	Seal ring rotating	1	1	1	1	1	1	1	1
103	Seal ring stationary	1	1	1	1	1	1	1	1
113	Socket set screw	3	3	3	3	3	3	3	3
109	O-ring nut	1	1	1	1	1	1	1	1
102	O-ring stat	1	1	1	1	1	1	1	1
107	O-ring sleeve	1	1	1	1	1	1	1	1
110	O-ring rotating	1	1	1	1	1	1	1	1
-	Grinding device	1	1	1	1	1	1	1	1
-	Emery cloth	1	1	1	1	1	1	1	1
-	Adjusting fork	1	1	1	1	1	1	1	1

Kit, impeller

Impeller for 22 mm shaft

Pos.	Pump type	CR 95	CR 95	CRN 95	CRN 95
	Number of stages	1	2-12	1	2-12
	Shaft diameter [mm]	22	22	22	22
	Kit no	99124922	99124953	99124954	99124955
49	Impeller	1	1	1	1
48	Nut for hub	1	1	1	1
49b	Split cone	1	1	1	1

Impeller for chamber with bush

Pos.	Pump type	CR, CRN 95	CR 125	CRN 125	CR, CRN 125	CR 155
	Number of stages	All	All	All	All	All
	Shaft diameter [mm]	28	28	28	36	28
	Kit no	99124956	99124957	99124958	99124959	99124960
49	Impeller	1	1	1	1	1
48	Nut for hub	1	1	1	1	1
49b	Split cone	1	1	1	1	1

Pos.	Pump type	CRN 155	CR, CRN 155	CR, CRN 185	CR, CRN 215	CR, CRN 255
	Number of stages	All	All	All	All	All
	Shaft diameter [mm]	28	36	36	36	36
	Kit no	99124961	99124962	99124963	99124964	99124965
49	Impeller	1	1	1	1	1
48	Nut for hub	1	1	1	1	1
49b	Split cone	1	1	1	1	1

Impeller with reduced diameter for 22 mm shaft

Pos.	Pump type	CR 95	CR 95	CRN 95	CRN 95
	Number of stages	1	2-12	1	2-12
	Shaft diameter [mm]	22	22	22	22
	Kit no	99124966	99124967	99124968	99124969
49a	Impeller	1	1	1	1
48	Nut for hub	1	1	1	1
49b	Split cone	1	1	1	1

Impeller with reduced diameter for chamber with bush

Pos.	Pump type	CR, CRN 95	CR 125	CRN 125	CR, CRN 125	CR 155
	Number of stages	All	All	All	All	All
	Shaft diameter [mm]	28	28	28	36	28
	Kit no	99124970	99124971	99124972	99124973	99124974
49a	Impeller	1	1	1	1	1
48	Nut for hub	1	1	1	1	1
49b	Split cone	1	1	1	1	1

Pos.	Pump type	CRN 155	CR, CRN 155	CR, CRN 185	CR, CRN 215	CR, CRN 255
	Number of stages	All	All	All	All	All
	Shaft diameter [mm]	28	36	36	36	36
	Kit no	99124975	99124976	99124977	99124978	99124979
49a	Impeller	1	1	1	1	1
48	Nut for hub	1	1	1	1	1
49b	Split cone	1	1	1	1	1

Impeller for chamber with bearing

Pos.	Pump type	CR, CRN 95	CR 125	CRN 125	CR, CRN 125	CR 155
	Number of stages	All	All	All	All	All
	Shaft diameter [mm]	28	28	28	36	28
	Kit no	99432556	99432557	99432558	99432559	99432560
49	Impeller	1	1	1	1	1
48a	Nut for hub	1	1	1	1	1
49b	Split cone	1	1	1	1	1

Pos.	Pump type	CRN 155	CR, CRN 155	CR, CRN 185	CR, CRN 215	CR, CRN 255
	Number of stages	All	All	All	All	All
	Shaft diameter [mm]	28	36	36	36	36
	Kit no	99432561	99432562	99432573	99432574	99432575
49	Impeller	1	1	1	1	1
48a	Nut for hub	1	1	1	1	1
49b	Split cone	1	1	1	1	1

Impeller with reduced diameter for chamber with bearing

Pos.	Pump type	CR, CRN 95	CR 125	CRN 125	CR, CRN 125	CR 155
	Number of stages	All	All	All	All	All
	Shaft diameter [mm]	28	28	28	36	28
	Kit no	99432576	99432577	99432578	99432579	99432580
49a	Impeller	1	1	1	1	1
48a	Nut for hub	1	1	1	1	1
49b	Split cone	1	1	1	1	1

Pos.	Pump type	CRN 155	CR, CRN 155	CR, CRN 185	CR, CRN 215	CR, CRN255
	Number of stages	All	All	All	All	All
	Shaft diameter [mm]	28	36	36	36	36
	Kit no	99432581	99432582	99432583	99432584	99432585
49a	Impeller	1	1	1	1	1
48a	Nut for hub	1	1	1	1	1
49b	Split cone	1	1	1	1	1

Kit, plug

Pos.	Rubber material	EPDM	FKM	EPDM	FKM	EPDM	FKM	EPDM	FKM
	THD in base	-				•			
	Standard	IEC	IEC	NEMA	NEMA	IEC	IEC	NEMA	NEMA
	Kit no	99262366	99262367	99262368	99262369	99262370	99262371	99262372	99262373
25, 38	Plug complete	5	5	3	3	7	7	5	5
-	Drain plug	-	-	2	2	-	-	2	2
18, 38	Air vent screw complete	1	1	1	1	1	1	1	1

Kit, O-ring**Shaft seal diameter Ø22**

Pos.	Rubber material	EPDM	FKM	EPDM	FKM	EPDM	FKM
	Kit no	99262378	99262379	99262380	99262381	99262382	99262383
37	O-ring (sleeve)	2	2	2	2	2	2
38	O-ring (plug)	8	8	8	8	8	8
109	O-ring (shaft seal outer)	1	1	1	1	1	1
110	O-ring (shaft seal inner)	1	1	1	1	1	1

Shaft seal diameter Ø28

Pos.	Rubber material	EPDM	FKM	EPDM	FKM	EPDM	FKM
	Kit no	99262384	99262385	99262386	99262387	99262388	99262389
37	O-ring (sleeve)	2	2	2	2	2	2
38	O-ring (plug)	8	8	8	8	8	8
109	O-ring (shaft seal outer)	1	1	1	1	1	1
110	O-ring (shaft seal inner)	1	1	1	1	1	1

Shaft seal diameter Ø36

Pos.	Rubber material	EPDM	FKM	EPDM	FKM	EPDM	FKM
	Kit no	99262390	99262391	99262392	99262393	99262394	99262395
37	O-ring (sleeve)	2	2	2	2	2	2
38	O-ring (plug)	8	8	8	8	8	8
109	O-ring (shaft seal outer)	1	1	1	1	1	1
110	O-ring (shaft seal inner)	1	1	1	1	1	1

Kit, flange blind

Pos.	Kit no	99262396
120k	Flange	1
120l	Hex head screw	6
-	Washer	6
120j	O-ring	2
19	Plug (pipe plug)	2

Kit, O-ring for thrust handling device

Pos.	Pump size	CRN 95	CRN 95	CRN 125	CRN 125	CRN 155	CRN 155
	Rubber material	EPDM	FKM	EPDM	FKM	EPDM	FKM
	Kit no	99262397	99262398	99262399	99262400	99262401	99262402
120j	O-ring for flange	3	3	3	3	3	3
120i	O-ring for stationary part	1	1	1	1	1	1
120c	O-ring for rotating part	1	1	1	1	1	1

Pos.	Pump size	CR, CRN185	CR, CRN 185	CR, CRN 215	CR, CRN 215	CR, CRN 255	CR, CRN 255
	Rubber material	EPDM	FKM	EPDM	FKM	EPDM	FKM
	Kit no	99262403	99262404	99262405	99262406	99262407	99262408
120j	O-ring for flange	3	3	3	3	3	3
120i	O-ring for stationary part	1	1	1	1	1	1
120c	O-ring for rotating part	1	1	1	1	1	1

Kit, for thrust handling device

Pos.	Pump size	CRN 95	CRN 125	CRN 155	CR, CRN 185	CR, CRN 215	CR, CRN 255
	Bearing material	SIC-SIC*	SIC-SIC	SIC-SIC	SIC-SIC	SIC-SIC	SIC-SIC
	Kit no	99262409	99262410	99262411	99262412	99262413	99262414
120a	Thrust disc	1	1	1	1	1	1
120b	Rotating bearing	1	1	1	1	1	1
120d	Lock ring	1	1	1	1	1	1
120g	Stationary bearing	1	1	1	1	1	1
120h	Lifting plate	1	1	1	1	1	1
120e	Lock washer set	1	1	1	1	1	1
120f	Nut	1	1	1	1	1	1
120l	Hex head screw	4	4	4	6	6	6
-	Washer	4	4	4	6	6	6

Pos.	Pump size	CRN 95	CRN 125	CRN 155	CR, CRN 185	CR, CRN 215	CR, CRN 255
	Bearing material	WC**-SIC	WC-SIC	WC-SIC	WC-SIC	WC-SIC	WC-SIC
	Kit no	99445736	99445737	99445738	99445739	99445740	99445741
120a	Thrust disc	1	1	1	1	1	1
120b	Rotating bearing	1	1	1	1	1	1
120d	Lock ring	1	1	1	1	1	1
120g	Stationary bearing	1	1	1	1	1	1
120h	Lifting plate	1	1	1	1	1	1
120e	Lock washer set	1	1	1	1	1	1
120f	Nut	1	1	1	1	1	1
120l	Hex head screw	4	4	4	6	6	6
-	Washer	4	4	4	6	6	6

* Silicon carbide (SIC)

** Tungsten carbide (WC)

Kit, wear part

Number of stages 1-4

	Pump size	CR, CRN 95	CR, CRN 95	CR, CRN 125	CR, CRN 125	CR, CRN 155
Pos.	Shaft diameter [mm]	22	28	28	36	28
	Kit no	99262415	99262416	99262417	99262418	99262419
45	Seal ring	4	4	4	4	4
65	Retainer for seal ring	4	4	4	4	4
47c	Bush	3	3	3	3	3
47d	Lock ring for bush	3	3	3	3	3
-	Adjusting fork	1	1	1	1	1

	Pump size	CR, CRN 155	CR, CRN 185	CR, CRN 215	CR, CRN 255
Pos.	Shaft diameter [mm]	36	36	36	36
	Kit no	99262420	99262421	99262422	99262423
45	Seal ring	4	4	4	4
65	Retainer for seal ring	4	4	4	4
47c	Bush	3	3	3	3
47d	Lock ring for bush	3	3	3	3
-	Adjusting fork	1	1	1	1

Number of stages 5-8

	Pump size	CR, CRN 95	CR, CRN 95	CR, CRN 125	CR, CRN 125	CR, CRN 155
Pos.	Shaft diameter [mm]	22	28	28	36	28
	Kit no	99262424	99262425	99262426	99262427	99262428
45	Seal ring	8	8	8	8	8
65	Retainer for seal ring	8	8	8	8	8
47c	Bush	6	6	6	6	6
47d	Lock ring for bush	6	6	6	6	6
-	Adjusting fork	1	1	1	1	1

	Pump size	CR, CRN 155	CR, CRN 185	CR, CRN 215	CR, CRN 255
Pos.	Shaft diameter [mm]	36	36	36	36
	Kit no	99262429	99262430	99262431	99262432
45	Seal ring	8	8	8	8
65	Retainer for seal ring	8	8	8	8
47c	Bush	6	6	6	6
47d	Lock ring for bush	6	6	6	6
-	Adjusting fork	1	1	1	1

Number of stages 9-12

	Pump size	CR, CRN 95	CR, CRN 95	CR, CRN 125	CR, CRN 125
Pos.	Shaft diameter [mm]	22	28	28	36
	Kit no	99262433	99262434	99262435	99262436
45	Seal ring	12	12	12	12
65	Retainer for seal ring	12	12	12	12
47c	Bush	10	10	10	10
47d	Lock ring for bush	10	10	10	10
-	Adjusting fork	1	1	1	1

	Pump size	CR, CRN 155	CR, CRN 155	CR, CRN 185
Pos.	Shaft diameter [mm]	28	36	36
	Kit no	99262437	99262438	99262439
45	Seal ring	12	12	12
65	Retainer for seal ring	12	12	12
47c	Bush	10	10	10
47d	Lock ring for bush	10	10	10
-	Adjusting fork	1	1	1

Kit, bearing

CR, CRN 95

	Pump size	CR,CRN 95	CR,CRN 95	CR,CRN 95	CR,CRN 95	CR,CRN 95	CR,CRN 95
	Pump shaft diameter [mm]	22	22	22	22	22	22
Pos.	Bearing material	SIC	SIC	SIC	WC	WC	WC
	Number of stages	1	2-4	5-12	1	2-4	5-12
	Kit no	99262442	99262443	99262446	99415811	99415812	99415825
47a	Bearing complete	1	1	2	1	1	2

CR, CRN 95-255

	Pump size	CR,CRN 95-255	CR, CRN 95-255	CR, CRN 95-255	CR, CRN 95-255	CR, CRN 125-255	CR, CRN 125-255	CR, CRN 125-255	CR, CRN 125-255
	Pump shaft diameter [mm]	28	28	28	28	36	36	36	36
Pos.	Bearing material	SIC	SIC	WC	WC	SIC	SIC	WC	WC
	Number of stages	1-4	5-12	1-4	5-12	1-4	5-12	1-4	5-12
	Kit no	99262444	99262447	99415823	99415826	99262445	99262448	99415824	99415827
47a	Bearing complete	1	2	1	2	1	2	1	2
47g	Lock ring	1	2	1	2	1	2	1	2
48a	Nut for hub	1	2	1	2	1	2	1	2

Kit, loose flange

CR, CRN 95

	Standards	DIN	DIN	JIS	JIS	ANSI	ANSI	DIN	DIN
	Description	EN DN100	EN DN100	JIS 100A	JIS 100A	B16.5 NPS4	B16.5 NPS4	EN DN100	EN DN100
Pos.	Material	EN1.4408	EN1.4408	EN1.4408	EN1.4408	EN1.4408	EN1.4408	EN1563 CED	EN1563 CED
	Pressure nominal	PN16	PN25/40	20K	30K	Cl.150	Cl.300	PN16	PN25/40
	Kit no	99432731	99432732	99432738	99432739	99432744	99432745	99432754	99432755
440a	Flange	1	1	1	1	1	1	1	1
440b	Lock ring	1	1	1	1	1	1	1	1

	Standards	ANSI	ANSI	JIS	JIS
	Description	B16.5 NPS4	B16.5 NPS4	JIS 100A	JIS 100A
Pos.	Material	EN1563 CED	EN1563 CED	EN1563 CED	EN1563 CED
	Pressure nominal	Cl.150	Cl.300	20K	30K
	Kit no	99432756	99432757	99432758	99432759
440a	Flange	1	1	1	1
440b	Lock ring	1	1	1	1

CR 125, CR 155

	Standards	DIN	DIN	JIS	JIS	ANSI	ANSI
	Description	EN DN150	EN DN150	JIS 150A	JIS 150A	B16.5 NPS6	B16.5 NPS6
Pos.	Material	EN1.4408	EN1.4408	EN1.4408	EN1.4408	EN1.4408	EN1.4408
	Pressure nominal	PN16	PN25/40	20K	30K	Cl.150	Cl.300
	Kit no	99432733	99432734	99432740	99432741	99432746	99432747
440a	Flange	1	1	1	1	1	1
440b	Lock ring	1	1	1	1	1	1

	Standards	JIS	ANSI	DIN	DIN	ANSI	JIS
	Description	JIS 150A	B16.5 NPS6	EN DN150	EN DN150	B16.5 NPS6	JIS 150A
Pos.	Material	EN1563 CED	EN1563 CED	EN1563 CED	EN1563 CED	EN1563 CED	EN1563 CED
	Pressure nominal	30K	Cl.300	PN25/40	PN16	Cl.150	20K
	Kit no	99432750	99432751	99432760	99432761	99432762	99432763
440a	Flange	1	1	1	1	1	1
440b	Lock ring	1	1	1	1	1	1

CR 185, CR 215, CR 255

	Standards	DIN	DIN	DIN	JIS	JIS	ANSI	ANSI	JIS
	Description	EN DN200	EN DN200	EN DN200	JIS 200A	JIS 200A	B16.5 NPS8	B16.5 NPS8	JIS 200A
Pos.	Material	EN1.4408	EN1.4408	EN1.4408	EN1.4408	EN1.4408	EN1.4408	EN1.4408	EN1563 CED
	Pressure nominal	PN16	PN25	PN40	20K	30K	Cl.150	Cl.300	30K
	Kit no	99432735	99432736	99432737	99432742	99432743	99432748	99432749	99432752
440a	Flange	1	1	1	1	1	1	1	1
440b	Lock ring	1	1	1	1	1	1	1	1

	Standards	ANSI	DIN	DIN	DIN	ANSI	JIS
	Description	B16.5 NPS8	EN DN200	EN DN200	EN DN200	B16.5 NPS8	JIS 200A
Pos.	Material	EN1563 CED	EN1563 CED	EN1563 CED	EN1563 CED	EN1563 CED	EN1563 CED
	Pressure nominal	Cl.300	PN40	PN25	PN16	Cl.150	20K
	Kit no	99432753	99432764	99432765	99432766	99432767	99432768
440a	Flange	1	1	1	1	1	1
440b	Lock ring	1	1	1	1	1	1

Kit, bracket for cathode electro deposition cover

Pos.	Pump size	CR95	CR 125, 155	CR 185, 215, 255
	Kit no	99432728	99432729	99432730
2c	Bracket for cover	4	4	4
2d	Screw	4	4	4

Spare, sleeve

CR, CRN 95

	Pump size	CR 95	CR 95	CR 95	CR 95	CR 95	CR 95	CR 95	CR 95
Pos.	Pressure nominal	PN30	PN30	PN30	PN30	PN30	PN30	PN30	PN30
	Number of stages	1	2	3	4	5	6	7	8
	Kit no	99196401	99196402	99196413	99196414	99196415	99196416	99196417	99196418
55	Sleeve	1	1	1	1	1	1	1	1

	Pump size	CRN 95	CRN 95	CRN 95	CRN 95	CRN 95	CRN 95	CRN 95	CRN 95
Pos.	Pressure nominal	PN30	PN30	PN30	PN30	PN30	PN30	PN30	PN30
	Number of stages	1	2	3	4	5	6	7	8
	Kit no	99196419	99196420	99196421	99196422	99196423	99196424	99196425	99196426
55	Sleeve	1	1	1	1	1	1	1	1

CRN 95

Pos.	Pump size	CRN 95	CRN 95	CRN 95	CRN 95	CRN 95	CRN 95	CRN 95	CRN 95
	Pressure nominal	PN40	PN40	PN40	PN40	PN40	PN40	PN40	PN40
	Number of stages	1	2	3	4	5	6	7	8
	Kit no	99196427	99196428	99196429	99196430	99196431	99196432	99196433	99196434
55	Sleeve	1	1	1	1	1	1	1	1

Pos.	Pump size	CRN 95	CRN 95	CRN 95	CRN 95
	Pressure nominal	PN40	PN40	PN40	PN40
	Number of stages	9	10	11	12
	Kit no	99196435	99196436	99196437	99196438
55	Sleeve	1	1	1	1

CR, CRN 125, 155

Pos.	Pump size	CR, CRN 125, 155	CR, CRN 125, 155	CR, CRN 125, 155	CR, CRN 125, 155	CR, CRN 125, 155	CR, CRN 125, 155
	Pressure nominal	PN30	PN30	PN30	PN30	PN30	PN30
	Number of stages	1	2	3	4	5	6
	Kit no	99196439	99196440	99196441	99196442	99196443	99196444
55	Sleeve	1	1	1	1	1	1

CRN 125, 155

Pos.	Pump size	CRN 125, 155	CRN 125, 155	CRN 125, 155	CRN 125, 155	CRN 125, 155	CRN 125, 155	CRN 125, 155	CRN 125, 155
	Pressure nominal	PN40	PN40	PN40	PN40	PN40	PN40	PN40	PN40
	Number of stages	1	2	3	4	5	6	7	8
	Kit no	99196445	99196446	99196447	99196448	99196449	99196450	99196451	99196452
55	Sleeve	1	1	1	1	1	1	1	1

Pos.	Pump size	CRN 125, 155	CRN 125, 155	CRN 125, 155	CRN 125, 155
	Pressure nominal	PN40	PN40	PN40	PN40
	Number of stages	9	10	11	12
	Kit no	99196453	99196454	99196455	99196456
55	Sleeve	1	1	1	1

CRN 185, 215, 255

Pos.	Pump size	CRN 185, 255	CRN 185, 255	CRN 185, 255	CRN 185, 255	CRN 185, 255	CRN 185, 255	CRN 185, 255	CRN 185, 255
	Pressure nominal	PN40	PN40	PN40	PN40	PN40	PN40	PN40	PN40
	Number of stages	1	2	3	4	5	6	7	8
	Kit no	99196457	99196458	99196459	99196460	99196461	99196462	99196463	99196464
55	Sleeve	1	1	1	1	1	1	1	1

Spare, base

CR, CRN 95

Pos.	Pump size	CR 95	CRN 95	CRN 95	CRN 95	CRN 95	CRN 95
	THD* in base	-	-	-	-	•	•
	Flange	Loose flange	Loose flange	Collar flange	PJE flange	Loose flange	PJE flange
	Pressure nominal	PN16, PN25, PN30, PN40	PN16, PN25, PN30, PN40	PN16	PN16, PN25, PN30, PN40	PN16, PN25, PN30, PN40	PN16, PN25, PN30, PN40
	Kit no	99196466	99196467	99196468	99196469	99196470	99196471
6	Base	1	1	1	1	1	1

CR, CRN 125, 155

	Pump size	CR 125, 155	CRN 125, 155	CRN 125, 155	CRN 125, 155	CRN 125, 155	CRN 125, 155
	THD in base	-	-	-	-	•	•
Pos.	Flange	Loose flange	Loose flange	Collar flange	PJE flange	Loose flange	PJE flange
	Pressure nominal	PN16, PN25, PN30, PN40	PN16, PN25, PN30, PN40	PN10	PN16, PN25, PN30, PN40	PN16, PN25, PN30, PN40	PN16, PN25, PN30, PN40
	Kit no	99196472	99196473	99196474	99196475	99196476	99196477
6	Base	1	1	1	1	1	1

CR, CRN 185, 215, 255

	Pump size	CR 185, 255	CRN 185, 255	CRN 185, 255	CRN 185, 255	CRN 185, 255
	THD in base	-	-	-	•	•
	Flange	Loose flange	Loose flange	PJE flange	Loose flange	PJE flange
	Pressure nominal	PN16, PN25, PN40	PN16, PN25, PN40	PN16, PN25, PN40	PN16, PN25, PN40	PN16, PN25, PN40
Pos.	Kit no	99196478	99445742	99445743	99196479	99196480
6	Base	1	1	1	1	1

* Thrust handling device (thrust bearing)

Spare, cover

CR, CRN 95

	Material	CR	CRN	CRN
Pos.	Shaft seal thread dia.	M50	M50	M66
	Sleeve diameter	254	254	254
	Kit no	99196493	99196494	99196495
2	Cover	1	1	1

CR, CRN 125, 155

	Material	CR	CRN	CRN
Pos.	Shaft seal thread dia.	M50	M50	M66
	Sleeve diameter	304	304	304
	Kit no	99196496	99196497	99196498
2	Cover	1	1	1

CR, CRN 185, 215, 255

	Material	CR	CR	CRN	CRN
Pos.	Shaft seal thread dia.	M50	M66	M50	M66
	Sleeve diameter	380	380	380	380
	Kit no	99196499	99196500	99196501	99196502
2	Cover	1	1	1	1

Spare, motor stool

CR, CRN 95

	Frame size	FF265	FF300	254-256TC	284-286TC	FF350	324-365TC	FF400	405-444TSD	FF500
Pos.	Stay bolts thread size	M20	M20	M20	M20	M20	M20	M20	M20	M20
	Kit no	99196503	99196504	99196505	99196506	99196507	99196508	99196509	99196510	99196511
1a	Motor stool	1	1	1	1	1	1	1	1	1

CR, CRN 125, 155

	Frame size	254-256TC	FF300	284-286TC	FF350	324-365TC	FF400	405-449TSD	FF500	FF600
Pos.	Stay bolts thread size	M24	M24	M24	M24	M24	M24	M24	M24	M24
	Kit no	99196512	99196513	99196514	99196515	99196516	99196517	99196518	99196519	99196520
1a	Motor stool	1	1	1	1	1	1	1	1	1

CR, CRN 185, 215, 255

	Frame size	FF300	FF350	324-365TC	FF400	405-449TSD	FF500	FF600
Pos.	Stay bolts thread size	M30	M30	M30	M30	M30	M30	M30
	Kit no	99196521	99196522	99196523	99196524	99196525	99196526	99196527
1a	Motor stool	1	1	1	1	1	1	1

Spare, shaft

CR 95 without thrust handling device

	Pump size	CR 95	CR 95	CR 95	CR 95	CR 95	CR 95	CR 95	CR 95
	Stage	1	2	3	4	5	6	7	8
Pos.	Shaft diameter [mm]	22	22	22	22	22	22	22	22
	Shaft seal diameter [mm]	22	22	22	22	22	22	22	22
	Kit no	99196528	99196529	99196530	99196531	99196532	99196533	99196534	99196535
51	Shaft	1	1	1	1	1	1	1	1

CRN 95 without thrust handling device

	Pump size	CRN 95	CRN 95	CRN 95	CRN 95	CRN 95	CRN 95	CRN 95	CRN 95
	Stage	1	2	3	4	5	6	7	8
Pos.	Shaft diameter [mm]	22	22	22	22	22	22	22	22
	Shaft seal diameter [mm]	22	22	22	22	22	22	22	22
	Kit no	99196536	99196537	99196538	99196539	99196540	99196541	99196542	99196543
51	Shaft	1	1	1	1	1	1	1	1

CRN 95 with thrust handling device

	Pump size	CRN 95	CRN 95	CRN 95	CRN 95	CRN 95	CRN 95	CRN 95	CRN 95
	Stage	4	5	6	7	8	9	10	11
Pos.	Shaft diameter [mm]	28	28	28	28	28	28	28	28
	Shaft seal diameter [mm]	28	28	28	28	28	28	28	28
	Kit no	99196544	99196545	99196546	99196547	99196548	99196549	99196550	99196551
51	Shaft	1	1	1	1	1	1	1	1

CRN 95 without thrust handling device

	Pump size	CRN 95	CRN 95	CRN 95	CRN 95	CRN 95	CRN 95	CRN 95
	Stage	5	6	7	8	9	10	11
Pos.	Shaft diameter [mm]	28	28	28	28	28	28	28
	Shaft seal diameter [mm]	22	22	22	22	22	22	22
	Kit no	99196553	99196554	99196555	99196556	99196557	99196558	99196559
51	Shaft	1	1	1	1	1	1	1

CR, CRN 125, 155 without thrust handling device

Pump size		CR, CRN 125, 155	CR, CRN 125, 155	CR, CRN 125, 155	CR, CRN 125, 155	CR, CRN 125, 155	CR, CRN 125, 155	CRN 125	CRN 125
Pos.	Stage	1	2	3	4	5	6	7	8
	Shaft diameter [mm]	28	28	28	28	28	28	28	28
	Shaft seal diameter [mm]	22	22	22	22	22	22	22	22
	Kit no	99196560	99196561	99196562	99196563	99196564	99196565	99196566	99196567
	51 Shaft	1	1	1	1	1	1	1	1

CR, CRN 125, 155 with thrust handling device

Pump size		CRN 95	CRN 95	CRN 95	CRN 95	CRN 95	CRN 95	CRN 95	CRN 95	CRN 95
Pos.	Stage	4	5	6	7	8	9	10	11	12
	Shaft diameter [mm]	28	28	28	28	28	28	28	28	28
	Shaft seal diameter [mm]	28	28	28	28	28	28	28	28	28
	Kit no	99196544	99196545	99196546	99196547	99196548	99196549	99196550	99196551	99196552
	51 Shaft	1	1	1	1	1	1	1	1	1

CR, CRN 185, 215, 255 without thrust handling device

Pump size		CR, CRN 185, 215, 255		CR, CRN 185, 215, 255		CR, CRN 185, 215		CR, CRN 185	
Pos.	Stage	1		2		3		4	
	Shaft diameter [mm]	36		36		36		36	
	Shaft seal diameter [mm]	22		22		22		22	
	Kit no	99196587		99196588		99196589		99196590	
	51 Shaft	1		1		1		1	

CR, CRN 125, 155 without thrust handling device

Pump size		CR, CRN 125, 155	CR, CRN 125, 155	CR, CRN 125, 155	CRN 125, 155	CRN 125, 155	CRN 125, 155	CRN 125, 155	CRN 125, 155	CRN 125
Pos.	Stage	4	5	6	7	8	9	10	11	12
	Shaft diameter [mm]	36	36	36	36	36	36	36	36	36
	Shaft seal diameter [mm]	36	36	36	36	36	36	36	36	36
	Kit no	99196578	99196579	99196580	99196581	99196582	99196583	99196584	99196585	99196586
	51 Shaft	1	1	1	1	1	1	1	1	1

CRN 125, 155 with thrust handling device

Pump size		CRN 155	CRN 155	CRN 125,155	CRN 125,155	CRN 125,155	CRN 125	CRN 125
Pos.	Stage	5	6	7	8	9	11	12
	Shaft diameter [mm]	36	36	36	36	36	36	36
	Shaft seal diameter [mm]	28	28	28	28	28	28	28
	Kit no	99196591	99196592	99196593	99196594	99196595	99196596	99196597
	51 Shaft	1	1	1	1	1	1	1

CR, CRN 185, 215, 255 with thrust handling device

Pump size		CR, CRN 215,255	CR, CRN 185, 215, 255	CR, CRN 185, 215, 255	CR, CRN 185, 215, 255	CR, CRN 185, 215	CR, CRN 185, 215
Pos.	Stage	1	2	3	4	5	6
	Shaft diameter [mm]	36	36	36	36	36	36
	Shaft seal diameter [mm]	28	28	28	28	28	28
	Kit no	99196598	99196599	99196600	99196601	99196602	99196603
	51 Shaft	1	1	1	1	1	1

CR, CRN 185, 215, 255 with thrust handling device

	Pump size	CR, CRN 215, 255	CR, CRN 185, 215, 255	CR, CRN 185, 215, 255	CR, CRN 185, 215, 255	CR, CRN 185, 215, 255	CRN 185, 215	CRN 185	CRN 185
	Stage	2	3	4	5	6	7	8	9
Pos.	Shaft diameter [mm]	36	36	36	36	36	36	36	36
	Shaft seal diameter [mm]	36	36	36	36	36	36	36	36
	Kit no	99196604	99196605	99196606	99196607	99196608	99196609	99196610	99196611
51	Shaft	1	1	1	1	1	1	1	1

Spare, suction part

	Model	CR 95	CRN 95	CRN 95	CR, CRN 125	CR, CRN 155	CR, CRN 185	CR, CRN 215	CR, CRN 255
Pos.	Number of strap	2	2	3	2, 4	2, 4	2, 4	2, 4	2, 4
	Kit no	99196612	99196613	99196614	99196615	99196616	99196617	99196618	99196619
44	Suction part	1	1	1	1	1	1	1	1

Spare, discharge

	Model	CR 95	CRN 95	CR, CRN 125, 155	CR, CRN 185, 215, 255
Pos.	Kit no	99196620	99196621	99196622	99196623
3b	Discharge part	1	1	1	1

Spare, thrust handling device flange

	Model	CRN 95	CRN 125	CRN 155	CR, CRN 185	CR, CRN 215	CR, CRN 255
Pos.	Kit no	99262449	99262450	99262451	99262452	99262453	99262454
120k	Flange machined	1	1	1	1	1	1

Spare, thrust handling device blind flange

	Model	CR 185, 215, 255
Pos.	Kit no	99262455
120k	Flange machined	1

Spare, chamber

Chamber with bearing

	Pump size	CR 95	CR 95	CRN 95	CRN 95	CRN 95	CR 125	CRN 125
Pos.	Shaft diameter	22	22	22	28	22	28	28
	Bearing material	SiC	WC	SiC	SiC	WC	SiC	SiC
	Kit no	99196624	99415870	99196625	99196632	99415871	99196636	99196637
4a	Chamber	1	1	1	1	1	1	1

	Pump size	CRN 125	CR 155	CRN 155	CR, CRN 185	CR, CRN 215	CR, CRN 255
Pos.	Shaft diameter	36	28	36	36	36	36
	Bearing material	SiC	SiC	SiC	SiC	SiC	SiC
	Kit no	99196644	99196648	99196656	99196660	99196664	99196668
4a	Chamber	1	1	1	1	1	1

Chamber with bush

Pos.	Pump size	CR 95	CRN 95	CRN 95	CR 125	CRN 125	CR 155
	Shaft diameter	22	22	28	28	28	28
	Material	Bush	Bush	Bush	Bush	Bush	Bush
	Kit no	99196626	99196627	99196633	99196638	99196639	99196650
4	Chamber	1	1	1	1	1	1

Pos.	Pump size	CRN 155	CRN 155	CR, CRN 185	CR, CRN 215	CR, CRN 255
	Shaft diameter	28	36	36	36	36
	Material	Bush	Bush	Bush	Bush	Bush
	Kit no	99196651	99196657	99196661	99196665	99196669
4	Chamber	1	1	1	1	1

Discharge chamber with bearing

Pos.	Pump size	CR 95	CR 95	CRN 95	CRN 95	CR 125	CRN 125
	Shaft diameter	22	22	22	22	28	28
	Material	SiC	WC	SiC	WC	SiC	SiC
	Kit no	99196628	99415872	99196629	99415883	99196640	99196641
3a	Chamber	1	1	1	1	1	1

Pos.	Pump size	CR 155	CRN 155	CR, CRN 185	CR, CRN 215	CR, CRN 255
	Shaft diameter	28	28	36	36	36
	Material	SiC	SiC	SiC	SiC	SiC
	Kit no	99196652	99196653	99196662	99196666	99196670
3a	Chamber	1	1	1	1	1

Discharge chamber with bush

Pos.	Pump size	CR 95	CRN 95	CRN 95	CR 125	CRN 125	CR 155
	Shaft diameter	22	22	28	28	28	28
	Material	Bush	Bush	Bush	Bush	Bush	Bush
	Kit no	99196630	99196631	99196635	99196642	99196643	99196654
3	Chamber	1	1	1	1	1	1

Pos.	Pump size	CRN 155	CRN 155	CR, CRN 185	CR, CRN 215	CR, CRN 255
	Shaft diameter	28	36	36	36	36
	Material	Bush	Bush	Bush	Bush	Bush
	Kit no	99196655	99196659	99196663	99196667	99196671
3	Chamber	1	1	1	1	1

Bulk, impeller, set of 3 pcs.**Shaft diameter 22 mm**

Pos.	Pump size	CR 95	CRN 95
	Kit no	99262526	99262527
49	Impeller	3	3

Shaft diameter 28 mm

Pos.	Pump size	CRN 95	CR 125	CRN 125	CR 155	CRN 155
	Kit no	99262528	99262529	99262530	99262532	99262533
49	Impeller	3	3	3	3	3

Shaft diameter 36 mm

Pos.	Pump size	CRN 125	CRN155	CRN185	CRN215	CRN255
	Kit no	99262531	99262534	99262535	99262536	99262537
49	Impeller	3	3	3	3	3

Bulk, impeller with reduced diameter, set of 3 pcs.**Shaft diameter 22 mm**

Pos.	Pump size	CR95	CRN95
	Kit no	99262538	99262539
49a	Impeller	3	3

Shaft diameter 28 mm

Pos.	Pump size	CRN95	CR125	CRN125	CR155	CRN155
	Kit no	99262540	99262541	99262542	99262544	99262545
49a	Impeller	3	3	3	3	3

Shaft diameter 36 mm

Pos.	Pump size	CRN125	CRN155	CRN185	CRN215	CRN255
	Kit no	99262543	99262546	99262547	99262548	99262549
49a	Impeller	3	3	3	3	3

Bulk, impeller, set of 10 pcs.**Shaft diameter 22 mm**

Pos.	Pump size	CR 95	CRN 95
	Kit no	99262550	99262551
49	Impeller	10	10

Shaft diameter 28 mm

Pos.	Pump size	CRN 95	CR 125	CRN 125	CR 155	CRN 155
	Kit no	99262552	99262553	99262554	99262556	99262557
49	Impeller	10	10	10	10	10

Shaft diameter 36 mm

Pos.	Pump size	CRN 125	CRN 155	CRN 185	CRN 215	CRN 255
	Kit no	99262555	99262558	99262559	99262560	99262561
49	Impeller	10	10	10	10	10

Bulk, impeller with reduced diameter, set of 10 pcs.**Shaft diameter 22 mm**

Pos.	Pump size	CR 95	CRN 95
	Kit no	99262562	99262563
49a	Impeller	10	10

Shaft diameter 28 mm

Pos.	Pump size	CRN 95	CR 125	CRN 125	CR 155	CRN 155
	Kit no	99262564	99262565	99262566	99262568	99262569
49a	Impeller	10	10	10	10	10

Shaft diameter 36 mm

Pos.	Pump size	CRN 125	CRN 155	CRN 185	CRN 215	CRN 255
	Kit no	99262567	99262570	99262571	99262572	99262573
49a	Impeller	10	10	10	10	10

Bulk, chamber, set of 3 pcs.

Chamber with bearing

Pos.	Pump size	CR 95	CRN 95	CRN 95	CR 95	CRN 95	CR 125	CRN 125	CRN 125
	Shaft diameter [mm]	22	22	28	22	22	28	28	36
	Bearing material	SiC	SiC	SiC	WC	WC	SiC	SiC	SiC
	Kit no	99262574	99262575	99262582	99446221	99446222	99262586	99262587	99262594
4a	Chamber	3	3	3	3	3	3	3	3

Pos.	Pump size	CR 125	CRN 125	CRN 125	CR 155	CRN 155	CRN 155	CR 155	CRN 155
	Shaft diameter [mm]	28	28	36	28	28	36	28	28
	Bearing material	WC	WC	WC	SiC	SiC	SiC	WC	WC
	Kit no	99446236	99446237	99446240	99262598	99262599	99262606	99446241	99446242
4a	Chamber	3	3	3	3	3	3	3	3

Pos.	Pump size	CRN 155	CRN 185	CRN 185	CRN 215	CRN 215	CRN 255	CRN 255
	Shaft diameter [mm]	36	36	36	36	36	36	36
	Bearing material	WC	SiC	WC	SiC	WC	SiC	WC
	Kit no	99446245	99262610	99446246	99262614	99446248	99262618	99446250
4a	Chamber	3	3	3	3	3	3	3

Chamber with bush

Pos.	Pump size	CR 95	CRN 95	CRN 95	CR 95	CRN 95	CR 125	CR 125
	Shaft diameter [mm]	22	22	28	22	22	28	28
	Material	Bush	Bush	Bush	WC	WC	Bush	Bush
	Kit no	99262576	99262577	99262583	99446233	99446234	99262588	99262589
4	Chamber	3	3	3	3	3	3	3

Pos.	Pump size	CRN 125	CR 155	CRN 155	CRN 155	CRN 185	CRN 215	CRN 255
	Shaft diameter [mm]	36	28	28	36	36	36	36
	Material	Bush	Bush	Bush	Bush	Bush	Bush	Bush
	Kit no	99262595	99262600	99262601	99262607	99262611	99262615	99262619
4	Chamber	3	3	3	3	3	3	3

Discharge chamber with bearing

Pos.	Pump size	CR 95	CRN 95	CRN 95	CR 125	CRN 125	CR 125	CRN 125	CR 155
	Shaft diameter [mm]	22	22	28	28	28	28	28	28
	Bearing material	SiC	SiC	WC	SiC	SiC	WC	WC	SiC
	Kit no	99262578	99262579	99446235	99262590	99262591	99446238	99446239	99262602
3a	Chamber	3	3	3	3	3	3	3	3

Pos.	Pump size	CRN 155	CR 155	CRN 155	CRN 185	CRN 185	CRN 215	CRN 215	CR 255
	Shaft diameter [mm]	28	28	28	36	36	36	36	36
	Bearing material	SiC	WC	WC	SiC	WC	SiC	WC	SiC
	Kit no	99262603	99446243	99446244	99262612	99446247	99262616	99446249	99262620
3a	Chamber	3	3	3	3	3	3	3	3

Discharge chamber with bush

Pos.	Pump size	CR 95	CRN 95	CRN 95	CR 125	CRN 125	CRN 125
	Shaft diameter [mm]	22	22	28	28	28	36
	Material	Bush	Bush	Bush	Bush	Bush	Bush
	Kit no	99262580	99262581	99262585	99262592	99262593	99262597
3	Chamber	3	3	3	3	3	3

Pos.	Pump size	CR 155	CRN 155	CRN 155	CRN 185	CRN 215	CRN 255
	Shaft diameter [mm]	28	28	36	36	36	36
	Material	Bush	Bush	Bush	Bush	Bush	Bush
	Kit no	99262604	99262605	99262609	99262613	99262617	99262621
3	Chamber	3	3	3	3	3	3

Bulk, chamber, set of 10 pcs.

Chamber with bearing

Pos.	Pump size	CR 95	CRN 95	CRN 95	CR 125	CRN 125	CRN 125	CR 155	CRN 155
	Shaft diameter [mm]	22	22	28	28	28	36	28	28
	Bearing material	SiC	SiC	SiC	SiC	SiC	SiC	SiC	SiC
	Kit no	99262622	99262623	99262630	99262634	99262635	99262642	99262656	99262657
4a	Chamber	10	10	10	10	10	10	10	10

Pos.	Pump size	CRN 155	CRN 185	CRN 215	CRN 255	CR 95	CRN 95	CRN 95	CR 125
	Shaft diameter [mm]	36	36	36	36	22	22	28	28
	Bearing material	SiC	SiC	SiC	SiC	WC	WC	WC	WC
	Kit no	99262664	99262668	99262672	99262676	99446252	99446253	99446256	99446257
4a	Chamber	10	10	10	10	10	10	10	10

Pos.	Pump size	CRN 125	CRN 125	CR 155	CRN 155	CRN 155	CRN 185	CRN 215	CRN 255
	Shaft diameter [mm]	28	36	28	28	36	36	36	36
	Bearing material	WC	WC	WC	WC	WC	WC		WC
	Kit no	99446258	99446261	99446262	99446263	99446266	99446267	99446269	99446271
4a	Chamber	10	10	10	10	10	10	10	10

Chamber with bush

Pos.	Pump size	CR 95	CRN 95	CRN 95	CR 125	CRN 125	CRN 125
	Shaft diameter [mm]	22	22	28	28	28	36
	Material	Bush	Bush	Bush	Bush	Bush	Bush
	Kit no	99262624	99262625	99262631	99262636	99262637	99262653
4	Chamber	10	10	10	10	10	10

Pos.	Pump size	CR 155	CRN 155	CRN 155	CRN 185	CRN 215	CRN 255
	Shaft diameter [mm]	28	28	36	36	36	36
	Material	Bush	Bush	Bush	Bush	Bush	Bush
	Kit no	99262658	99262659	99262665	99262669	99262673	99262677
4	Chamber	10	10	10	10	10	10

Discharge chamber with bearing

Pos.	Pump size	CR 95	CRN 95	CR 125	CRN 125	CR 155	CRN 155	CRN 185	CRN 215	CR 255
	Shaft diameter [mm]	22	22	28	28	28	28	36	36	36
	Bearing material	SiC	SiC	SiC	SiC	SiC	SiC	SiC	SiC	SiC
	Kit no	99262626	99262627	99262638	99262639	99262660	99262661	99262670	99262674	99262678
3a	Chamber	10	10	10	10	10	10	10	10	10

	Pump size	CR 95	CRN 95	CR 125	CRN 125	CR 155	CRN 155	CRN 185	CRN 215	CRN 255
Pos.	Shaft diameter [mm]	22	22	28	28	28	28	36	36	36
	Bearing material	WC	WC	WC	WC	WC	WC	WC	WC	WC
	Kit no	99446254	99446255	99446259	99446260	99446264	99446265	99446268	99446270	99446272
	3a Chamber	10	10	10	10	10	10	10	10	10

Discharge chamber with bush

	Pump size	CR 95	CRN 95	CRN 95	CR 125	CRN 125	CRN 125
Pos.	Shaft diameter [mm]	22	22	28	28	28	36
	Material	Bush	Bush	Bush	Bush	Bush	Bush
	Kit no	99262628	99262629	99262633	99262640	99262641	99262655
	3 Chamber	10	10	10	10	10	10

	Pump size	CR 155	CRN 155	CRN 155	CRN 185	CRN 215	CRN 255
Pos.	Shaft diameter [mm]	28	28	36	36	36	36
	Material	Bush	Bush	Bush	Bush	Bush	Bush
	Kit no	99262662	99262663	99262667	99262671	99262675	99262679
	3 Chamber	10	10	10	10	10	10

Bulk, nut for hub, set of 3 pcs.

	Pump size	CR 95	CR, CRN 95-255	CR, CRN 125-255	CR, CRN 95-255	CR, CRN 125-255
Pos.	Bearing	-	-	-	•	•
	Shaft diameter [mm]	22	28	36	28	36
	Kit no	99262680	99262681	99262682	99446217	99446218
	48 Nut for hub	3	3	3	3	3

Bulk, nut for hub, set of 10 pcs.

	Pump size	CR 95	CR, CRN 95-255	CR, CRN 125-255	CR, CRN 95-255	CR, CRN 125-255
Pos.	Bearing	-	-	-	•	•
	Shaft diameter [mm]	22	28	36	28	36
	Kit no	99262683	99262684	99262685	99446219	99446220
	48 Nut for hub	10	10	10	10	10

Bulk, split cone, set of 3 pcs.

	Pump size	CR 95	CR, CRN 95-255	CR, CRN 125-255
Pos.	Shaft diameter [mm]	22	28	36
	Kit no	99262686	99262687	99262688
	49b Spline cone	3	3	3

Bulk, split cone, set of 10 pcs.

	Pump size	CR 95	CR, CRN 95-255	CR, CRN 125-255
Pos.	Shaft diameter [mm]	22	28	36
	Kit no	99262689	99262690	99262691
	49b Spline cone	10	10	10

Bulk, nut for staybolt, set of 4 pcs.

	Pump size	CR, CRN 95	CR, CRN 95, 125, 155	CR, CRN 125, 155	CR, CRN 185, 215, 255
Pos.	Thread size	M16	M20	M24	M30
	Kit no	99262692	99262693	99262694	99262695
36	Nut	4	4	4	4

Bulk, washer for staybolt, set of 4 pcs.

	Pump size	CR, CRN 95	CR, CRN 125, 155	CR, CRN 185, 215, 255	CR, CRN 95	CR, CRN 125, 155
Pos.	Thread size	M20	M24	M30	M16	M20
	Kit no	99262696	99262697	99262698	99262699	99262700
66a	Washer	4	4	4	4	4

Bulk, head socket screw for thrust handling device flange, set of 4 or 6 pcs.

	Pump size	CR, CRN 95	CR, CRN 125, 155	CR, CRN 185, 215, 255
Pos.	Screw	Screw for THD flange	Screw for THD flange	Screw, THD flange/blind
	Kit no	99262701	99262702	99262703
120l	Hex socket head cap screw	4	4	6

Bulk, washer for thrust handling device flange, set of 4 or 6 pcs.

	Pump size	CR, CRN 95	CR, CRN 125, 155	CR, CRN 185, 215, 255
Pos.	Screw	Washer for THD flange	Washer for THD flange	Washer, THD flange/blind
	Kit no	99262704	99262705	99262706
-	Washer	4	4	6

Bulk, O-ring for thrust handling device blind flange, set of 2 pcs.

	Pump size	CR, CRN 95-255	CR, CRN 95-255
Pos.	Type	O-ring 123x3,5 EPDM EP1/1/5 BLK	O-ring 123,42x3,53 FKM V70GA
	Kit no	99262707	99262708
120j	O-ring	2	2

2. Exploded view

Pumps with Ø22 shaft and without thrust-handling device

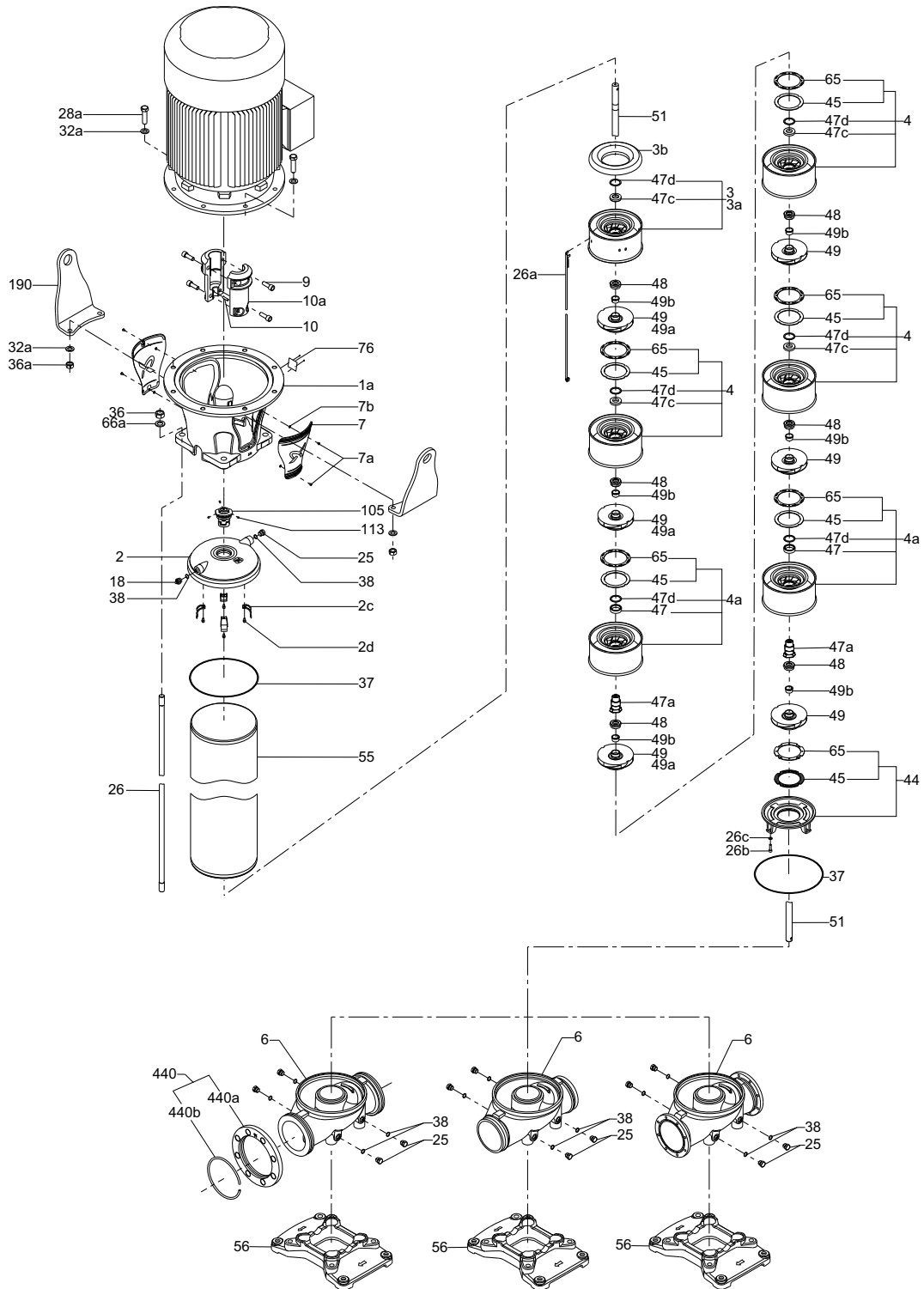


Fig. 1 Exploded view of CR, CRN pump with Ø22 shaft and without thrust-handling device

TM06 7389 1318

Pumps with Ø28 or Ø36 shaft and without thrust-handling device

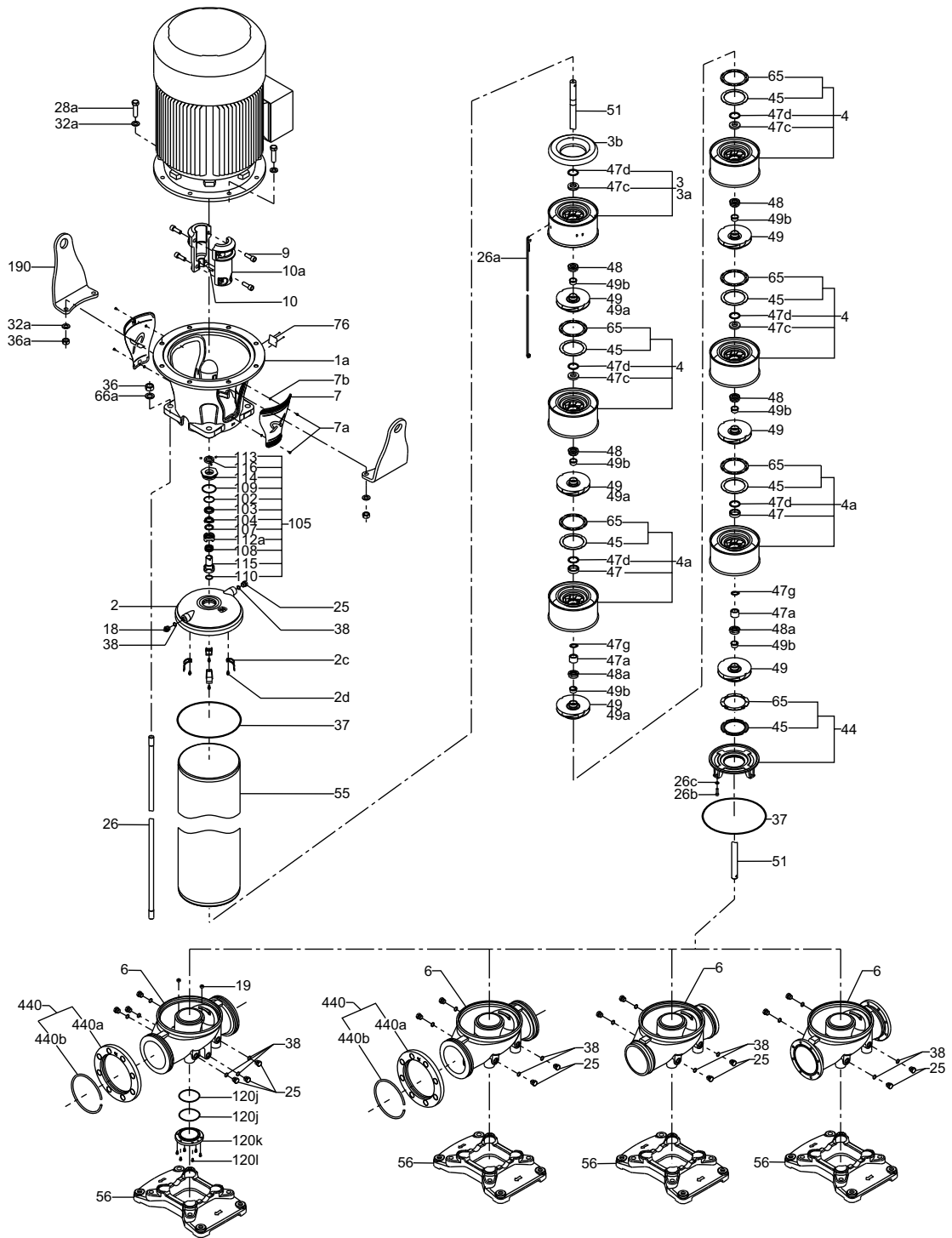


Fig. 2 Exploded view of CR, CRN pump with Ø28 or Ø36 shaft and without thrust-handling device

TM07 1184 13 18

Pumps with $\varnothing 28$ or $\varnothing 36$ shaft and with thrust-handling device

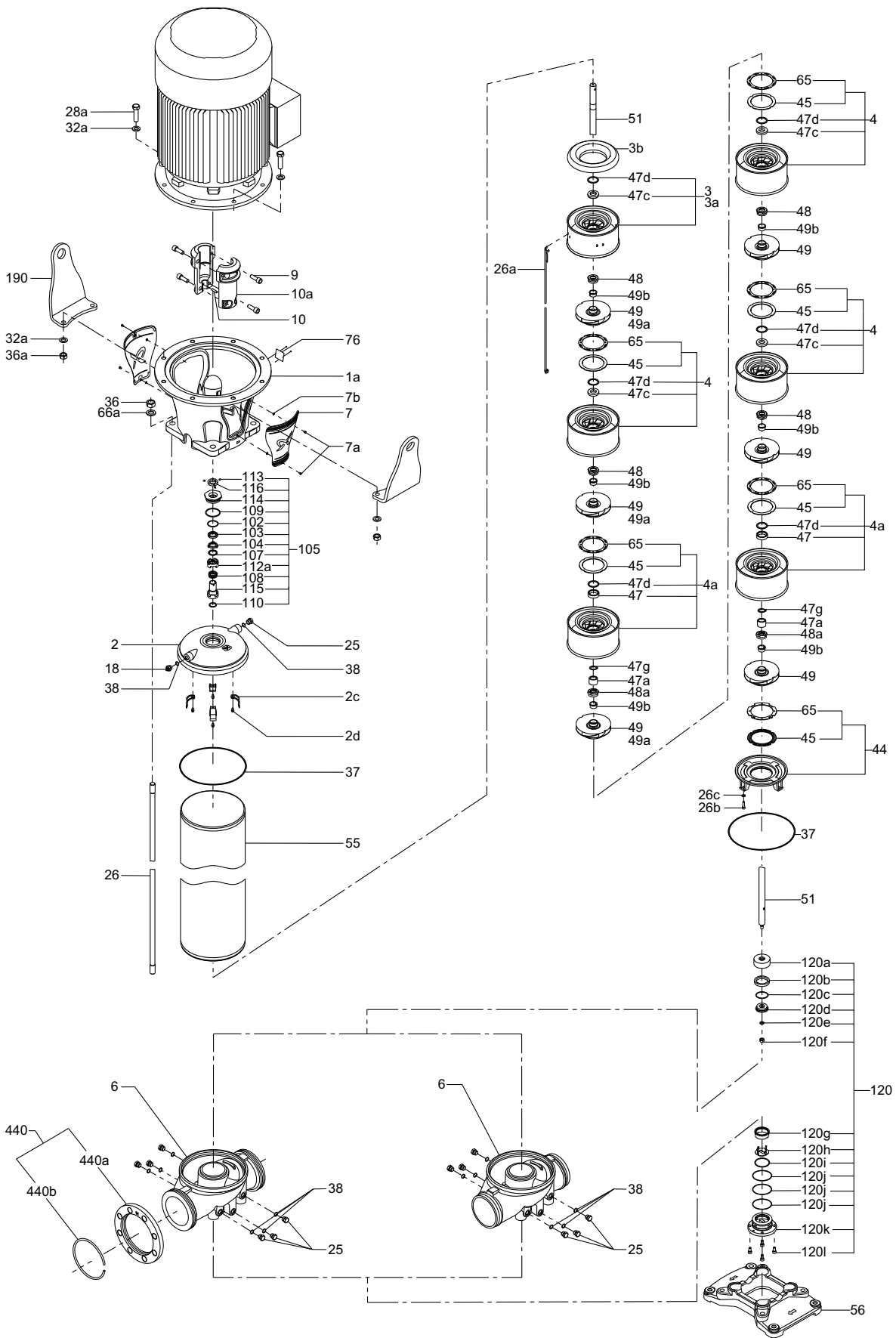


Fig. 3 Exploded view of CR, CRN pump with $\varnothing 28$ or $\varnothing 36$ shaft and with thrust-handling device

TM07 1183 1318

3. Recommended spare parts: CR, CRN 95 to 255

50/60 Hz

Customer Information

Project title:	Customer name:
Reference number:	Customer number:
Customer contact:	Customer phone number: ()
	Fax number: ()

Pump information

Quotation made by

CR, CRN 95 to 255

Company name:

Prepared by:

Phone number: ()

Fax number: ()

Date:

Quote number:

Recommended spare parts

Recommended service parts

Kits	CR, CRN 95 to 255		Product number of part/kit
	3 years units per pump	6 years units per pump	
Wear part kit	1	2	
Shaft seal kit or shaft seal wear part kit (depending on shaft diameter)	1	2	
O-ring kit	1	2	
THD kit	-	1	
Motor bearings kit	-	1	

be think innovate

99448203 0618

ECM: 1232863

GRUNDFOS A/S
DK-8850 Bjerringbro . Denmark
Telephone: +45 87 50 14 00
www.grundfos.com

Pumpland.ru

GRUNDFOS 

The name Grundfos, the Grundfos logo, and be think innovate are registered trademarks owned by Grundfos Holding A/S or Grundfos A/S, Denmark. All rights reserved worldwide. © Copyright Grundfos Holding A/S